

ADS

Askılar ve Destekler Hangers and Supports

A P E X M E T A L C A B L E T R A Y S Y S T E M S

ASKILAR ve
DESTEKLER

ADS Serisi / Serie

ve Aksesuarlar
and Accessories



ADS Askılar ve Destekler

Hangers and Supports

ADS

ADS SERİSİ / SERIE

Sayfa No Page No	İNDEKS / INDEX
ADS 01	Kaynaksız Duvar Konsolları / Wall Brackets Unwelded
ADS 02	Kaynaksız U ve Z Profil Duvar Konsolları / Unwelded U and Z Profiles Wall Brackets
ADS 03	Kaynaklı Duvar Konsolları / Welded Wall Brackets
ADS 04	U ve Z Profil Tavan Tespit Elemanı - U Profil - Z Profil / Head Plate for U and Z Profiles- U Profiles- Z Profiles
ADS 05	U Profil Tavan Tespit Elemanları- U Profil Tavan Desteği - Çiftli U Profil Tavan Desteği Head Plates For U Profiles - U Ceiling Brackets - Double U Ceiling Brackets
ADS 06	U Profil Konsolları - L Tavan Desteği - L Kanal Taşıyıcı - L Destekler U Profile Brackets - L Hade Plate - Tray Hanging Supports - L Supports
ADS 07	U Profil konsolları - U Profiller - Z Profiller / U Profile Brackets - U Profiles - Z Profiles
ADS 08	U Profiller - Z Profiller - L Profiller / U Profiles - Z Profiles - L Profiles
ADS 09	U-L-Z Tipi Tijli Taşıyıcı - Tijli Tavan Montaj Elemanları / U-L-Z Type Carriers Light And Heavy Type - Ceiling Brackets
ADS 10	Tijli Taşıyıcı - Lastikli Boru Kelepçesi / Tray Carriers With Threaded Rods - Pipe Clamps With Rubber
ADS 11	Omega Yer Ve Duvar Tespit Elemanı / Wall And Floor Fixing Brackets
ADS 12	U Profil Zemin Desteği - U Profil Sabitleme Elemanı - Merdiveni Konsola Ve Duvara Tespit Elemanı U Profil Floor Supports - U Profil Fixing Supports - Fixing Unit For The Ladder To Bracket And Wall
ADS 13	W Askı Elemanı / W Hanging Supports
ADS 14	W Tavan Askı Elemanı - W Profil / W Ceiling Hanging Unit - W Profiles
ADS 15	I Demir (NPI) - I Demir Tavan Desteği / I Bracket - I Bracket Head Plate
ADS 16	I Demir Bileştirme Elemanı - I Demir Bağlantı Elemanları / I Bracket Connection Unit- I Bracket Connection Unit
ADS 17	I Demir Tavan Bağlantı Elemanları - I Demir Duvar Konsolları / I Bracket Ceiling Head Plate - I Bracket
ADS 18	T Demir (NPI) - T Demir Tavan Desteği / T Bracket - T Bracket Head Plate
ADS 19	U Demir (NPU) - U Demir Tavan Desteği / U Bracket - U Bracket Head Plate
ADS 20	NPI Merdiven / NPI Ladders
ADS 21	C Profil Tavan Desteği - C Profil Konsolları / C Profile Head Plate - C Clamping Bracket
ADS 22	C Profiller / C Profiles
ADS 23	Kaynaklı Konsol Tipi C Profil / Cantilever Arm Non-Perforated
ADS 24	Kaynaklı Konsol Tipi C Profil / Cantilever Arm Perforated
ADS 25	C Profil Bağlantı Elemanları / C Profile Fixing Accessories
ADS 26	C Profil Bağlantı Elemanları / C Profile Fixing Accessories
ADS 27	C Profil Bağlantı Elemanları / C Profile Fixing Accessories
ADS 28	C Profil Bağlantı Elemanları / C Profile Fixing Accessories
ADS 29	C Profil Bağlantı Elemanları / C Profile Fixing Accessories
ADS 30	C Profil Bağlantı Elemanları / C Profile Fixing Accessories
ADS 31	C Profil Bağlantı Elemanları / C Profile Fixing Accessories
ADS 32	C Profil Bağlantı Elemanları / C Profile Fixing Accessories
ADS 33	C Profil Bağlantı Elemanları / C Profile Base Plate - C Profile Fixing Accessories
ADS 34	C Profil Bağlantı Elemanları - Kablo Çıkış Elemanları / C Profile Fixing Accessories Cable Drop Out Unit
ADS 35	Somun - Flanşlı Somun - Bombe Başlı Cıvata - Altı Köşe Başlı Cıvata / Nut - Flanged Nut - Round Head Bolt - Hexagone Bolt
ADS 36	Düz Pul - Yaylı Pul - Tırtıllı Pul / Plain Washer - Spring Washer - Lock Washer
ADS 37	Sac Gömleklili Dübel - S Tipi (kırmızı Tapalı) Dübel - Boru Gömleklili Dübel - Çakma (kovan) Tipi Dübel / Sleeve Anchor - Drop In Anchor (S Type) - Fix Bolt Anchor - Drop In Anchor
ADS 38	Kopilya - Askı Tiji - Montaj Somunları - Uzatma Somunları - Askı Mengene Splint Pin Split Pins - Beam Clamp - Mounting Nuts -Threaded Rod - Extension Nut

ADS Serisi / Serie

Sipariş Kodu (Order Code)	w (mm)	h (mm)	t (mm)	L (mm)	Kg/Adet (Kg/Pcs.)
AP-DKH707	40	70	1,20	70	0,144
AP-DKH710	40	70	1,20	100	0,168
AP-DKH712	40	70	1,20	120	0,191
AP-DKH715	40	70	1,20	150	0,206
AP-DKH720	40	70	1,20	200	0,245
AP-DKH725	40	70	1,20	250	0,284

► AÇIKLAMALAR / INSTRUCTIONS :

Not: Kaynaksız duvar konsollarında ölçü toleransı ± 3 mm.'dir.

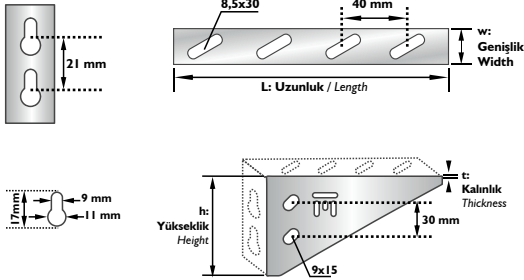
! Belirtilen ağırlıklar kesim ağırlıklarıdır.

! Tüm kablo merdivenleri, Metrik 8 cıvata ve somun kullanımına uygundur.

Note: The dimension tolerance in unwelded wall bracket is ± 3 mm

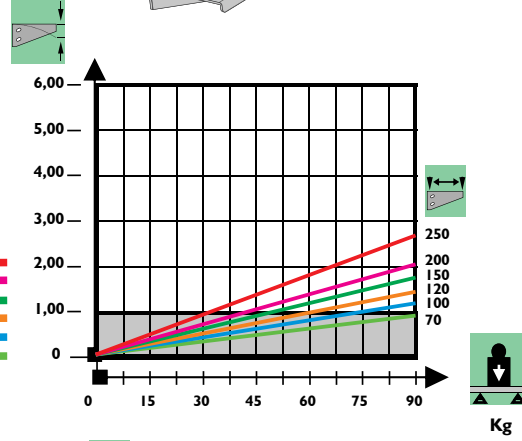
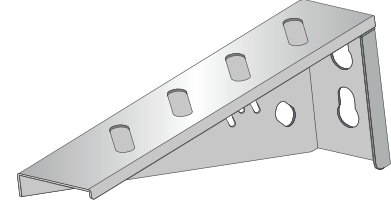
! The indicated weights are the weights before fabrication.

! All the brackets are convenient for M8 bolt, nut and steel anchor usage.



KAYNAKSIZ DUVAR KONSOLLARI
WALL BRACKET UNWELDED

w: Genişlik Width
h: Yükseklik Height
t: Kalınlık Thickness
L: Uzunluk Length



250 x 1,20mm
200 x 1,20mm
150 x 1,20mm
120 x 1,20mm
100 x 1,20mm
70 x 1,20mm

Kilogram Olarak Müsade Edilen Kablo Kanalı ve Kablo Merdiveni Yüğü
Cable Tray / Cable Ladder Load in Kg

Taşıyıcı Konsolda Yükleme Bağı Oluşabilecek Esneme Payı
The Bending Percentage Of The Trays Carried By Supporters

'm' Destek Uzunluğu
'm' Supports Length

Sipariş Kodu (Order Code)	w (mm)	h (mm)	t (mm)	L (mm)	Kg/Adet (Kg/Pcs.)
AP-DKH730	40	120	2,00	300	0,631
AP-DKH740	40	120	2,00	400	0,783
AP-DKH750	40	120	2,00	500	0,935
AP-DKH760	40	120	2,00	600	1,087

► AÇIKLAMALAR / INSTRUCTIONS :

Not: Kaynaksız duvar konsollarında ölçü toleransı ± 3 mm.'dir.

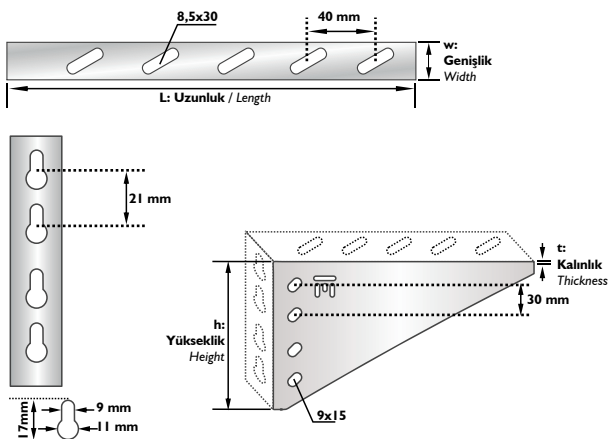
! Belirtilen ağırlıklar kesim ağırlıklarıdır.

! Tüm kablo merdivenleri, Metrik 8 cıvata ve somun kullanımına uygundur.

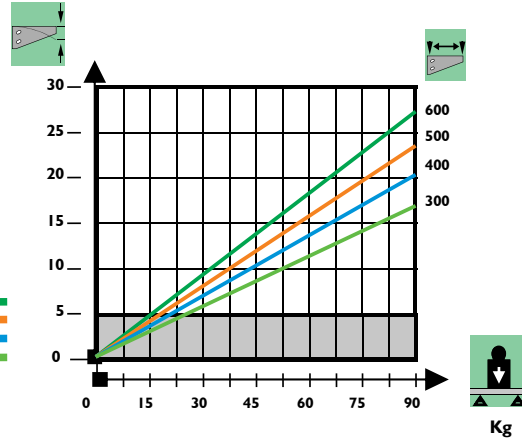
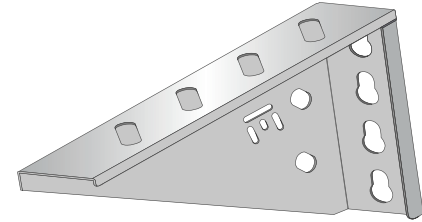
Note: The dimension tolerance in unwelded wall bracket is ± 3 mm

! The indicated weights are the weights before fabrication.

! All the brackets are convenient for M8 bolt, nut and steel anchor usage.



KAYNAKSIZ DUVAR KONSOLLARI
WALL BRACKET UNWELDED



600 x 2,00mm
500 x 2,00mm
400 x 2,00mm
300 x 2,00mm

Kilogram Olarak Müsade Edilen Kablo Kanalı ve Kablo Merdiveni Yüğü
Cable Tray / Cable Ladder Load in Kg

Taşıyıcı Konsolda Yükleme Bağı Oluşabilecek Esneme Payı
The Bending Percentage Of The Trays Carried By Supporters

'm' Destek Uzunluğu
'm' Supports Length

Sipariş Kodu (Order Code)	w (mm)	h (mm)	t (mm)	L (mm)	Kg/Adet (Kg/Pcs.)
AP-DKH707S	40	70	1,20	100	0,190
AP-DKH710S	40	70	1,20	130	0,214
AP-DKH712S	40	70	1,20	150	0,229
AP-DKH715S	40	70	1,20	180	0,253
AP-DKH720S	40	70	1,20	230	0,291
AP-DKH725S	40	70	1,20	280	0,330

AÇIKLAMALAR / INSTRUCTIONS :

Not: Kaynaksız duvar konsollarında ölçü toleransı ± 3 mm.'dir.

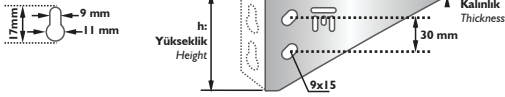
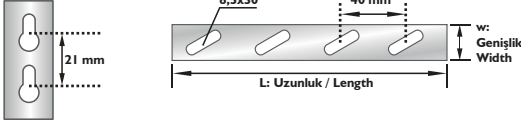
! Belirtilen ağırlıklar kesim ağırlıklarıdır.

! Tüm kablo merdivenleri, Metrik 8 civata ve somun kullanımına uygundur.

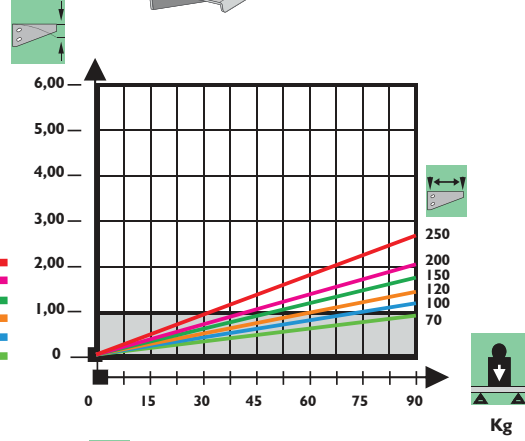
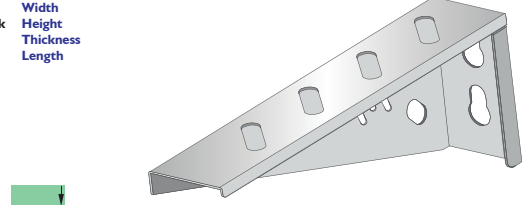
Note: The dimension tolerance in unwelded wall bracket is ± 3 mm

! The indicated weights are the weights before fabrication.

! All the brackets are convenient for M8 bolt, nut and steel anchor usage.



250 x 1,20mm
200 x 1,20mm
150 x 1,20mm
120 x 1,20mm
100 x 1,20mm
70 x 1,20mm



Kilogram Olarak Müsade Edilen Kablo Kanalı ve Kablo Merdiveni Yüğü
Cable Tray / Cable Ladder Load in Kg

Taşıyıcı Konsolda Yüklemeye Bağlı Oluşabilecek Esneme Payı
The Bending Percentage Of The Trays Carried By Supporters

'm' Destek Uzunluğu
'm' Supports Lenght

ADS

Sipariş Kodu (Order Code)	w (mm)	h (mm)	t (mm)	L (mm)	Kg/Adet (Kg/Pcs.)
AP-DKH730S	40	120	2,00	330	0,676
AP-DKH740S	40	120	2,00	430	0,828
AP-DKH750S	40	120	2,00	530	0,980
AP-DKH760S	40	120	2,00	630	1,132

AÇIKLAMALAR / INSTRUCTIONS :

Not: Kaynaksız duvar konsollarında ölçü toleransı ± 3 mm.'dir.

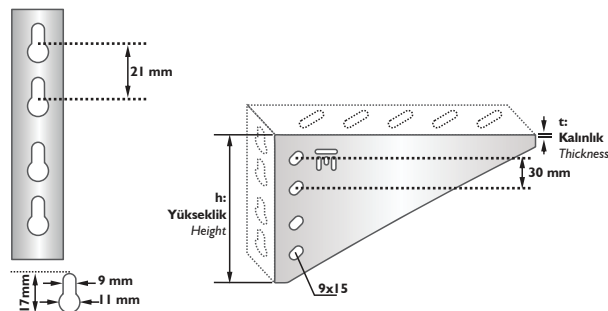
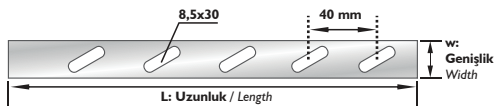
! Belirtilen ağırlıklar kesim ağırlıklarıdır.

! Tüm kablo merdivenleri, Metrik 8 civata ve somun kullanımına uygundur.

Note: The dimension tolerance in unwelded wall bracket is ± 3 mm

! The indicated weights are the weights before fabrication.

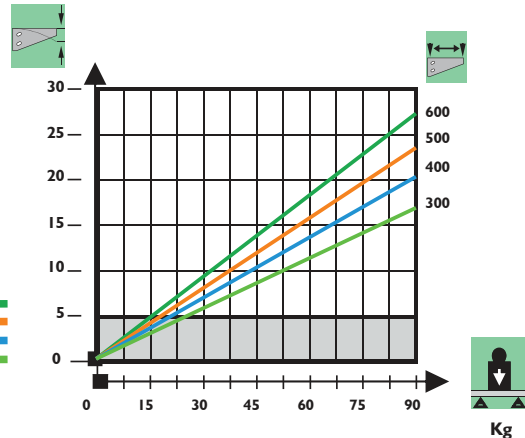
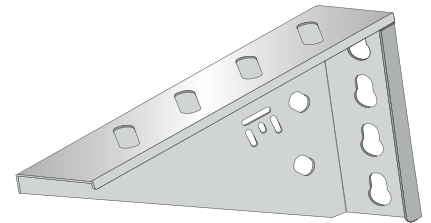
! All the brackets are convenient for M8 bolt, nut and steel anchor usage.



600 x 2,00mm
500 x 2,00mm
400 x 2,00mm
300 x 2,00mm

KAYNAKSIZ DUVAR KONSOLLARI
 WALL BRACKET UNWELDED

w: Genişlik Width
h: Yükseklik Height
t: Kalınlık Thickness
L: Uzunluk Length



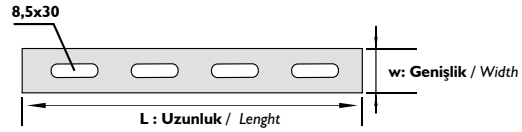
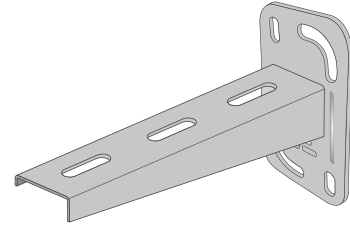
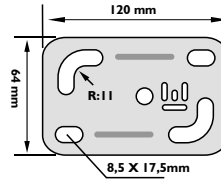
Kilogram Olarak Müsade Edilen Kablo Kanalı ve Kablo Merdiveni Yüğü
Cable Tray / Cable Ladder Load in Kg

Taşıyıcı Konsolda Yüklemeye Bağlı Oluşabilecek Esneme Payı
The Bending Percentage Of The Trays Carried By Supporters

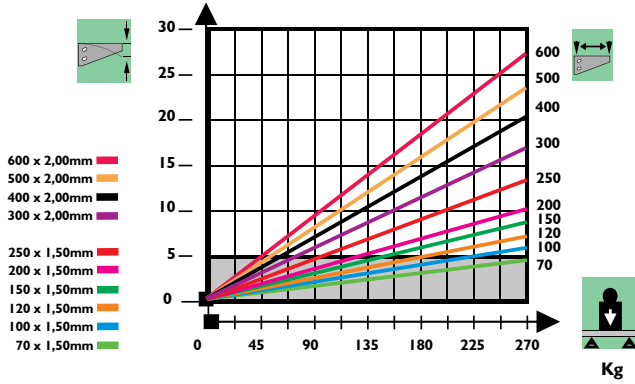
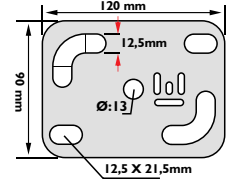
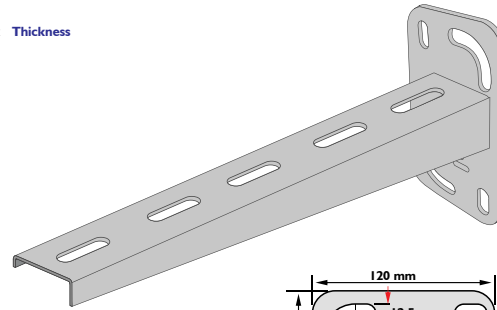
'm' Destek Uzunluğu
'm' Supports Lenght

Sipariş Kodu (Order Code)	w (mm)	t (mm)	L (mm)	Kg/Adet (Kg/Pcs.)
AP-DK707	33	1,50	70	0,161
AP-DK710	33	1,50	100	0,190
AP-DK712	33	1,50	120	0,209
AP-DK715	33	1,50	150	0,237
AP-DK720	33	1,50	200	0,284
AP-DK725	33	1,50	250	0,330
AP-DK730	40	2,00	300	0,707
AP-DK740	40	2,00	400	0,834
AP-DK750	40	2,00	500	1,052
AP-DK760	40	2,00	600	1,188

DUVAR KONSOLLARI
WELDED WALL BRACKET



t : Kalınlık Thickness



Kilogram Olarak Müsade Edilen Kablo Kanalı ve Kablo Merdiveni Yüğü
Cable Tray / Cable Ladder Load in Kg

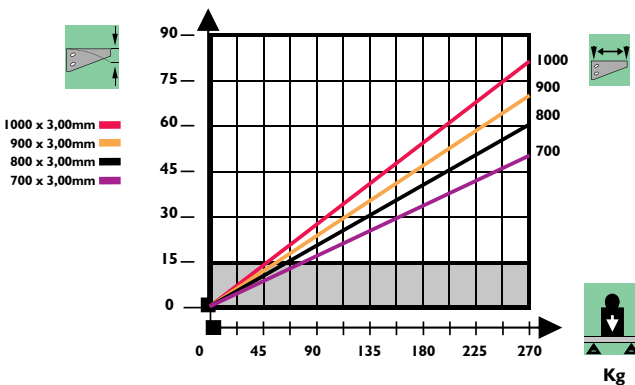
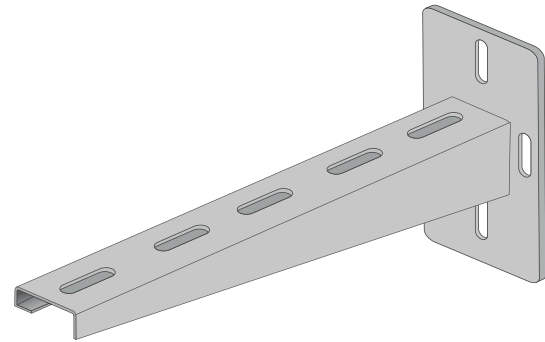
Taşıyıcı Konsolda Yüklemeye Bağlı Olabilecek Esneme Payı
The Bending Percentage Of The Trays Carried By Supporters

'm' Destek Uzunluğu
'm' Supports Length

Sipariş Kodu (Order Code)	w (mm)	t (mm)	L (mm)	Kg/Adet (Kg/Pcs.)
AP-DKA770	40	3,00	700	2,449
AP-DKA780	40	3,00	800	2,708
AP-DKA790	40	3,00	900	2,967
AP-DKA7100	40	3,00	1000	3,227

AĞIR SİSTEM DUVAR KONSOLLARI
HEAVY DUTY WELDED WALL BRACKET

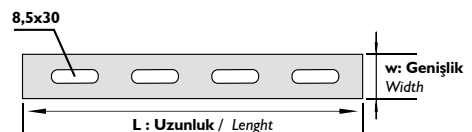
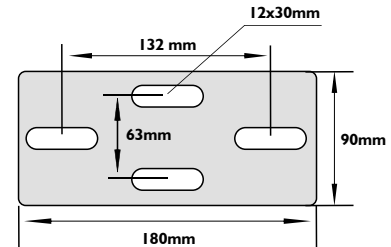
t : Kalınlık Thickness



Kilogram Olarak Müsade Edilen Kablo Kanalı ve Kablo Merdiveni Yüğü
Cable Tray / Cable Ladder Load in Kg

Taşıyıcı Konsolda Yüklemeye Bağlı Olabilecek Esneme Payı (mm)
The Bending Percentage Of The Trays Carried By Supporters (mm)

'm' Destek Uzunluğu
'm' Supports Length



► AÇIKLAMALAR / INSTRUCTIONS :

Not: Kaynaklı duvar konsollarında ölçü toleransı ± 3 mm.'dir.

! Belirtilen ağırlıklar kesim ağırlıklarıdır.

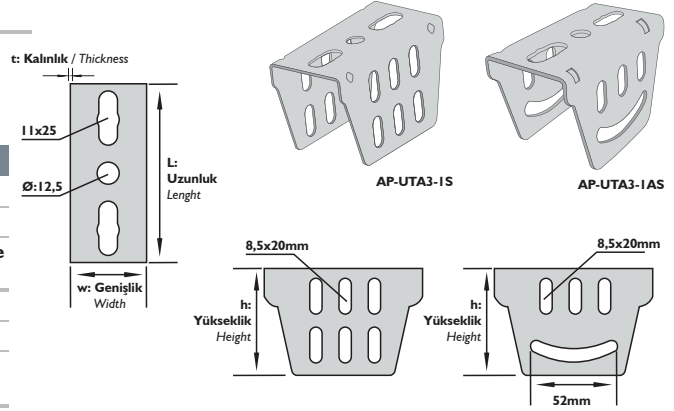
! Tüm kablo merdivenleri, Metrik 8 civata, somun ve M10 çelik dübel kullanımına uygundur.

Note: The dimension tolerance in welded wall bracket is ± 3 mm

! The indicated weights are the weights before fabrication.

! All the brackets are convenient for M8 bolt, nut and M8-10 steel anchor usage.

Sipariş Kodu (Order Code)	w (mm)	h (mm)	t (mm)	L (mm)	Kg/Adet (Kg/Pcs.)
AP-UTA3-IS	50	65	2,00	95	0,287
AP-UTA3-IAS	50	65	2,00	95	0,287

U VE Z PROFİL TAVAN TESPİT ELEMANI
 HEAD PLATE FOR U AND Z PROFILES

AÇIKLAMALAR / INSTRUCTIONS :

Not: U ve Z Profil Tavan Tespit Elemanlarında ölçü toleransı ± 3 mm.'dir.

! Belirtilen ağırlıklar kesim ağırlıklarıdır.

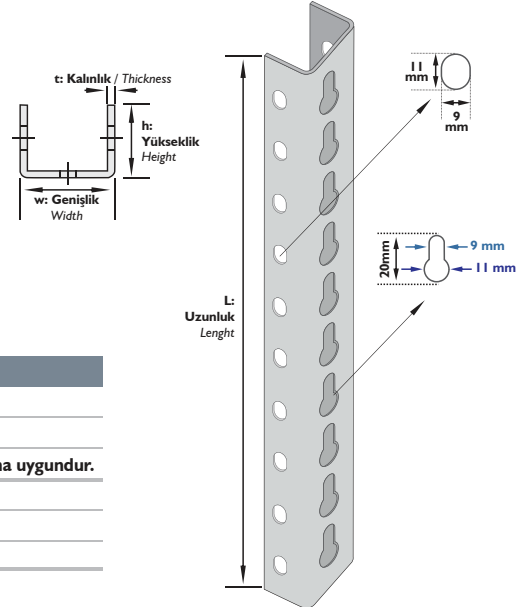
! U ve Z Profil Tavan Tespit Elemanları, Metrik 8 civata, somun ve Metrik 10 Çelik Dübel kullanımına uygundur.

Note: The dimension tolerance in welded wall bracket is ± 3 mm

! The indicated weights are the weights before fabrication.

! Head plate for U and Z Profiles are convenient for M8 bolt, nut and M10 steel anchor usage.

Sipariş Kodu (Order Code)	w (mm)	h (mm)	t (mm)	L (mm)	Kg/Mt (Kg/Mt)
AP-UA3-3 100.15	45	30	1,50	1000	1,178
AP-UA3-3 150.15	45	30	1,50	1500	1,178
AP-UA3-3 200.15	45	30	1,50	2000	1,178
AP-UA3-3 250.15	45	30	1,50	2500	1,178
AP-UA3-3 300.15	45	30	1,50	3000	1,178
AP-UA3-3 100.20	45	30	2,00	1000	1,413
AP-UA3-3 150.20	45	30	2,00	1500	1,413
AP-UA3-3 200.20	45	30	2,00	2000	1,413
AP-UA3-3 250.20	45	30	2,00	2500	1,413
AP-UA3-3 300.20	45	30	2,00	3000	1,413

U PROFİLLER
 U PROFILES

AÇIKLAMALAR / INSTRUCTIONS :

Not: U Profillerde ölçü toleransı ± 3 mm.'dir.

! Belirtilen ağırlıklar kesim ağırlıklarıdır.

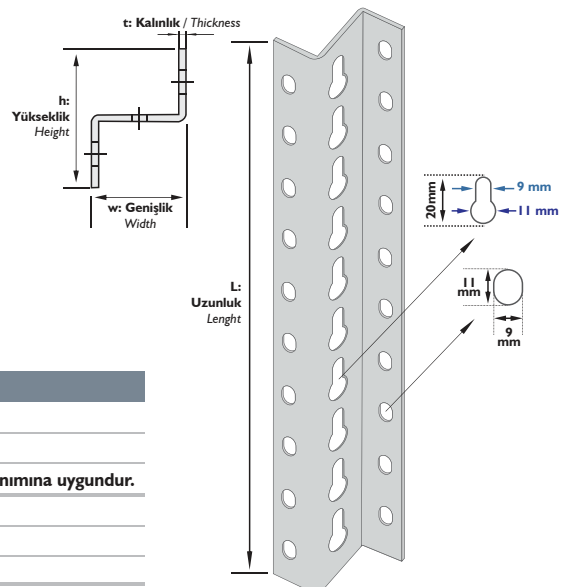
! U Profiller, Metrik 8 civata, somun ve Metrik 8 yada Metrik 10 Çelik Dübel kullanımına uygundur.

Note: The dimension tolerance in U Profiles is ± 3 mm

! The indicated weights are the weights before fabrication.

! U Profiles are convenient for M8 bolt, nut and M8 or M10 steel anchor usage.

Sipariş Kodu (Order Code)	w (mm)	h (mm)	t (mm)	L (mm)	Kg/Mt (Kg/Mt)
AP-ZP3-2 100.15	45	60	1,50	1000	1,178
AP-ZP3-2 150.15	45	60	1,50	1500	1,178
AP-ZP3-2 200.15	45	60	1,50	2000	1,178
AP-ZP3-2 250.15	45	60	1,50	2500	1,178
AP-ZP3-2 300.15	45	60	1,50	3000	1,178
AP-ZP3-2 100.20	45	60	2,00	1000	1,413
AP-ZP3-2 150.20	45	60	2,00	1500	1,413
AP-ZP3-2 200.20	45	60	2,00	2000	1,413
AP-ZP3-2 250.20	45	60	2,00	2500	1,413
AP-ZP3-2 300.20	45	60	2,00	3000	1,413

Z PROFİLLER
 Z PROFILES

AÇIKLAMALAR / INSTRUCTIONS :

Not: Z Profillerde ölçü toleransı ± 3 mm.'dir.

! Belirtilen ağırlıklar kesim ağırlıklarıdır.

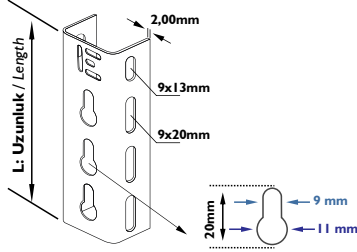
! Z Profiller, Metrik 8 civata, somun ve Metrik 8 yada Metrik 10 Çelik Dübel kullanımına uygundur.

Note: The dimension tolerance in Z Profiles is ± 3 mm

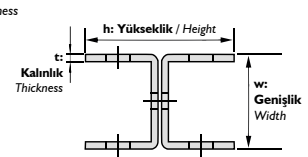
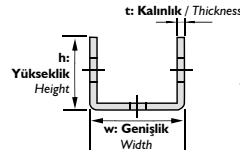
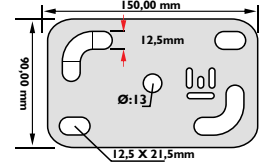
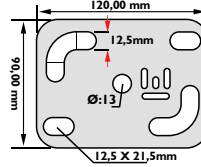
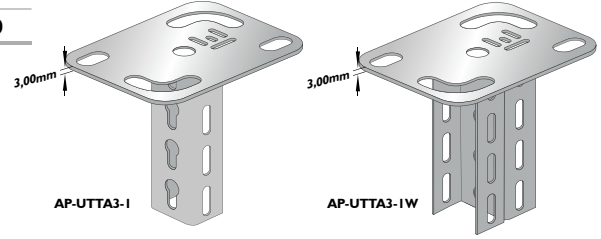
! The indicated weights are the weights before fabrication.

! Z Profiles are convenient for M8 bolt, nut and M8 or M10 steel anchor usage.

Sipariş Kodu (Order Code)	w (mm)	h (mm)	t (mm)	L (mm)	Kg/Adet (Kg/Pcs.)
AP-UTTA3-I	40	28	2,00	125	0,416
AP-UTTA3-IW	40	56	2,00	125	0,640



U PROFİL TAVAN TESPİT ELEMANLARI
HEAD PLATES FOR U PROFILE



AÇIKLAMALAR / INSTRUCTIONS :

Not: U Profil Tavan Tespit Elemanlarında ölçü toleransı ± 3 mm.'dir.

! Belirtilen ağırlıklar kesim ağırlıklarıdır.

! U Profil Tavan Tespit Elemanları, Metrik 8 cıvata, somun ve Metrik 10 Çelik Dübel kullanımına uygundur.

Note: The dimension tolerance in Head plate for U Profile is ± 3 mm

! The indicated weights are the weights before fabrication.

! Head plate for U Profiles are convenient for M8 bolt, nut and M10 steel anchor usage.

Sipariş Kodu (Order Code)	w (mm)	h (mm)	t (mm)	L (mm)	Kg/Adet (Kg/Pcs.)
AP-UTA3-2 20.15	45	30	1,50	200	0,537
AP-UTA3-2 30.15	45	30	1,50	300	0,628
AP-UTA3-2 40.15	45	30	1,50	400	0,820
AP-UTA3-2 50.15	45	30	1,50	500	0,961
AP-UTA3-2 60.15	45	30	1,50	600	1,102
AP-UTA3-2 70.20	45	30	2,00	700	1,243
AP-UTA3-2 80.20	45	30	2,00	800	1,385
AP-UTA3-2 90.20	45	30	2,00	900	1,526
AP-UTA3-2 100.20	45	30	2,00	1000	1,667

AÇIKLAMALAR / INSTRUCTIONS :

Not: U Profil Tavan Desteklerinde ölçü toleransı ± 3 mm.'dir.

! Belirtilen ağırlıklar kesim ağırlıklarıdır.

! U Profil Tavan Tespit Elemanları, Metrik 8 cıvata, somun ve Metrik 10 Çelik Dübel kullanımına uygundur.

Note: The dimension tolerance in U Ceiling Brackets is ± 3 mm

! The indicated weights are the weights before fabrication.

! U Ceiling Brackets are convenient for M8 bolt, nut and M8-10-12 steel anchor usage.

Sipariş Kodu (Order Code)	w (mm)	h (mm)	t (mm)	L (mm)	Kg/Adet (Kg/Pcs.)
AP-UTA3-2W 20.15	45	60	1,50	200	0,820
AP-UTA3-2W 30.15	45	60	1,50	300	1,102
AP-UTA3-2W 40.15	45	60	1,50	400	1,385
AP-UTA3-2W 50.15	45	60	1,50	500	1,667
AP-UTA3-2W 60.15	45	60	1,50	600	1,950
AP-UTA3-2W 70.20	45	60	2,00	700	2,233
AP-UTA3-2W 80.20	45	60	2,00	800	2,515
AP-UTA3-2W 90.20	45	60	2,00	900	2,798
AP-UTA3-2W 100.20	45	60	2,00	1000	3,080

AÇIKLAMALAR / INSTRUCTIONS :

Not: U Profil Tavan Desteklerinde ölçü toleransı ± 3 mm.'dir.

! Belirtilen ağırlıklar kesim ağırlıklarıdır.

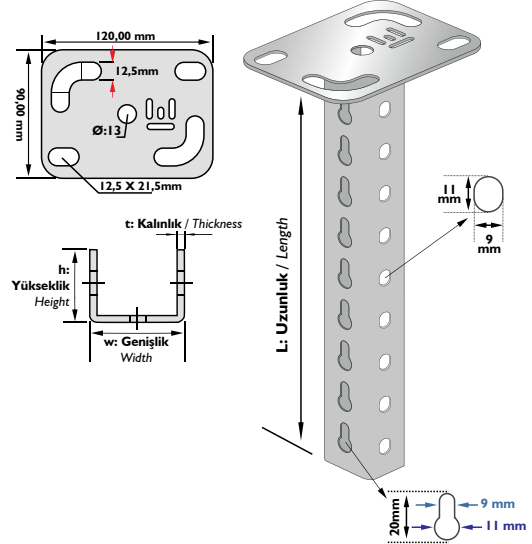
! U Profil Tavan Tespit Elemanları, Metrik 8 cıvata, somun ve Metrik 10 Çelik Dübel kullanımına uygundur.

Note: The dimension tolerance in U Ceiling Brackets is ± 3 mm

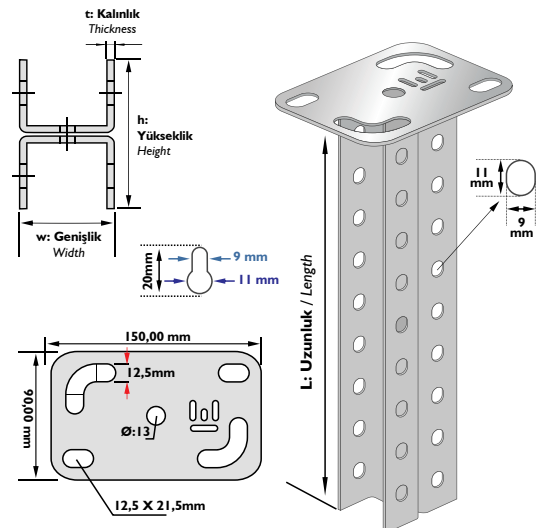
! The indicated weights are the weights before fabrication.

! U Ceiling Brackets are convenient for M8 bolt, nut and M8-10-12 steel anchor usage.

U - PROFİL TAVAN DESTEĞİ
U - CEILING BRACKETS



ÇİFTLİ U - PROFİL TAVAN DESTEĞİ
DOUBLE U - CEILING BRACKETS



Sipariş Kodu (Order Code)	w (mm)	L (mm)	t (mm)	Kg/Adet (Kg/Pcs.)
AP-LTA2-1	40	120	1,50	0,195
AP-LTA2-2 30	40	300	1,50	0,352
AP-LTA2-2 40	40	400	1,50	0,439
AP-LTA2-2 50	40	500	1,50	0,526
AP-LTA2-2 60	40	600	1,50	0,613
AP-LTA2-2 70	40	700	1,50	0,700
AP-LTA2-2 80	40	800	1,50	0,788
AP-LTA2-2 90	40	900	1,50	0,875
AP-LTA2-2 100	40	1000	1,50	0,962

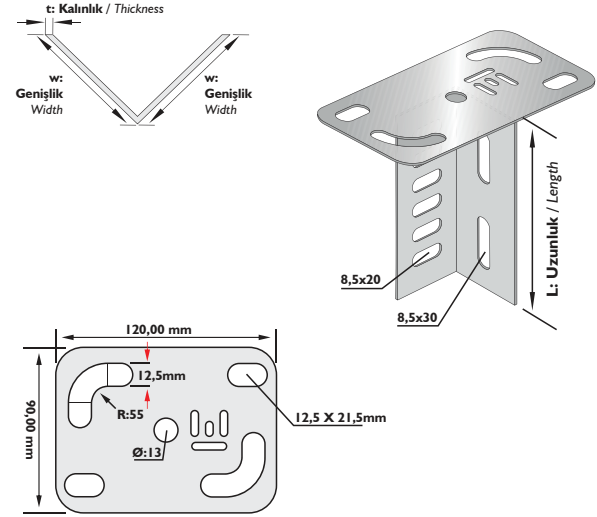
AÇIKLAMALAR / INSTRUCTIONS :

NOT: Ölçü toleransı ± 3 mm.'dir.

! Belirtilen ağırlıklar kesim ağırlıklarıdır.

NOTE: The dimension tolerance in ± 3 mm

! The indicated weights are the weights before fabrication.

L TAVAN DESTEĞİ
 L - HEAD PLATE


Sipariş Kodu (Order Code)	w (mm)	L (mm)	h (mm)	t (mm)	Kg/Adet (Kg/Pcs.)
AP-KK05	55	120	60	1,20	0,174
AP-KK07	75	120	60	1,20	0,182
AP-KK10	105	120	60	1,20	0,194
AP-KK12	125	120	60	1,20	0,201
AP-KK15	155	120	60	1,50	0,241
AP-KK20	205	120	60	1,50	0,265

AÇIKLAMALAR / INSTRUCTIONS :

NOT: Ölçü toleransı ± 3 mm.'dir.

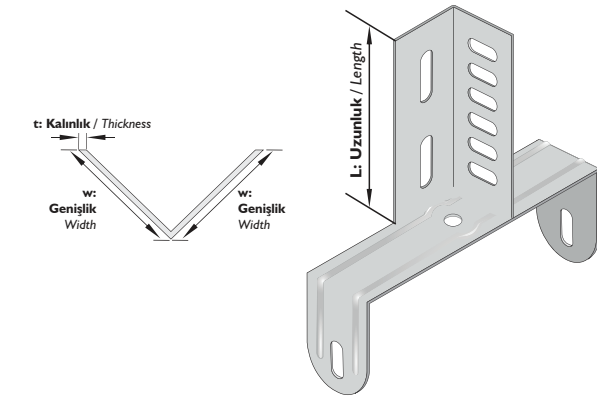
! Belirtilen ağırlıklar kesim ağırlıklarıdır.

! Metrik 8 cıvata, somun ve çelik dübel kullanımına uygundur.

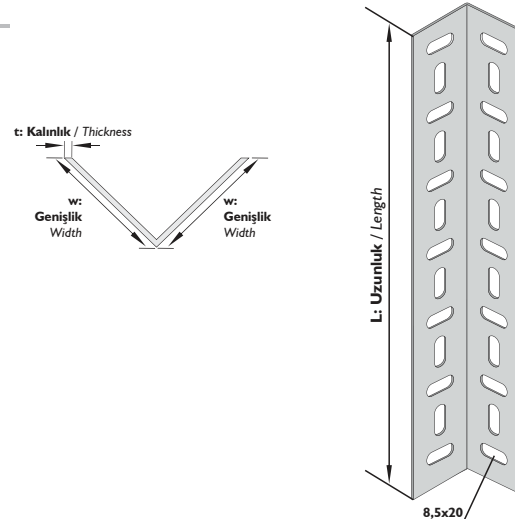
NOTE: The dimension tolerance in ± 3 mm

! The indicated weights are the weights before fabrication.

! Convenient for M8 bolt, nut and steel anchor usage.

L KANAL TAŞIYICI
 TRAY HANGING SUPPORTS


Sipariş Kodu (Order Code)	w (mm)	L (mm)	t (mm)	Kg/Adet (Kg/Pcs.)
AP-LA2-3 100.15	40	1000	1,50	0,942

L DESTEKLER
 L - SUPPORTS

AÇIKLAMALAR / INSTRUCTIONS :

NOT: Ölçü toleransı ± 3 mm.'dir.

! Belirtilen ağırlıklar kesim ağırlıklarıdır.

! Metrik 8 cıvata, somun ve çelik dübel kullanımına uygundur.

L Destekler 2000, 2500mm ve 3000mm olarak üretilebilmektedir.

NOTE: The dimension tolerance in ± 3 mm

! The indicated weights are the weights before fabrication.

! Convenient for M8 bolt, nut and steel anchor usage.

Upon request L Supports can be manufactured in 2000, 2500 and 3000mm length.

Sipariş Kodu (Order Code)	w (mm)	L (mm)	t (mm)	Kg/Adet (Kg/Pcs.)
AP-SK707	40	100	1,20	0,127
AP-SK710	40	130	1,20	0,165
AP-SK712	40	150	1,20	0,191
AP-SK715	40	180	1,20	0,229
AP-SK720	40	230	1,20	0,292
AP-SK725	40	280	1,50	0,445
AP-SK730	40	330	1,50	0,525
AP-SK740	40	430	2,00	0,820
AP-SK750	40	530	2,00	1,011
AP-SK760	40	630	2,00	1,202

➤ **AÇIKLAMALAR / INSTRUCTIONS :**

NOT: Ölçü toleransı ± 3 mm.'dir.

! Belirtilen ağırlıklar kesim ağırlıklarıdır.

NOTE: The dimension tolerance in ± 3 mm

! The indicated weights are the weights before fabrication.

Sipariş Kodu (Order Code)	w (mm)	h (mm)	t (mm)	L (mm)	Kg/Mt (Kg/Mt)
AP-UA3-4 100.15	45	30	1,50	1000	1,178
AP-UA3-4 150.15	45	30	1,50	1500	1,178
AP-UA3-4 200.15	45	30	1,50	2000	1,178
AP-UA3-4 250.15	45	30	1,50	2500	1,178
AP-UA3-4 300.15	45	30	1,50	3000	1,178
AP-UA3-4 100.20	45	30	2,00	1000	1,413
AP-UA3-4 150.20	45	30	2,00	1500	1,413
AP-UA3-4 200.20	45	30	2,00	2000	1,413
AP-UA3-4 250.20	45	30	2,00	2500	1,413
AP-UA3-4 300.20	45	30	2,00	3000	1,413

➤ **AÇIKLAMALAR / INSTRUCTIONS :**

Not: U Profillerde ölçü toleransı ± 3 mm.'dir.

! Belirtilen ağırlıklar kesim ağırlıklarıdır.

! U Profiller, Metrik 8 cıvata, somun ve Metrik 8 yada Metrik 10 Çelik Dübel kullanımına uygundur.

Note: The dimension tolerance in U Profiles is ± 3 mm

! The indicated weights are the weights before fabrication.

! U Profiles are convenient for M8 bolt, nut and M8 or M10 steel anchor usage.

Sipariş Kodu (Order Code)	w (mm)	h (mm)	t (mm)	L (mm)	Kg/Mt (Kg/Mt)
AP-UA3-5 100.15	50	40	1,50	1000	1,460
AP-UA3-5 150.15	50	40	1,50	1500	1,460
AP-UA3-5 200.15	50	40	1,50	2000	1,460
AP-UA3-5 250.15	50	40	1,50	2500	1,460
AP-UA3-5 300.15	50	40	1,50	3000	1,460
AP-UA3-5 100.20	50	40	2,00	1000	1,752
AP-UA3-5 150.20	50	40	2,00	1500	1,752
AP-UA3-5 200.20	50	40	2,00	2000	1,752
AP-UA3-5 250.20	50	40	2,00	2500	1,752
AP-UA3-5 300.20	50	40	2,00	3000	1,752

➤ **AÇIKLAMALAR / INSTRUCTIONS :**

Not: U Profillerde ölçü toleransı ± 3 mm.'dir.

! Belirtilen ağırlıklar kesim ağırlıklarıdır.

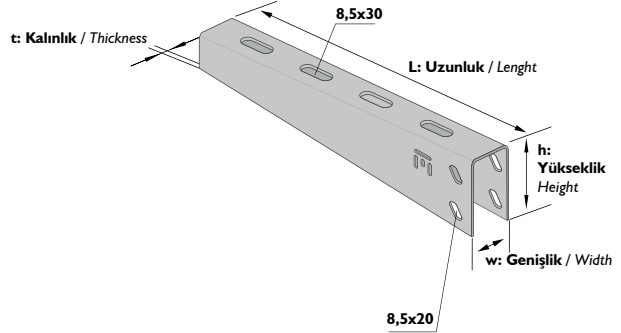
! U Profiller, Metrik 8 cıvata, somun ve Metrik 8 yada Metrik 10 Çelik Dübel kullanımına uygundur.

Note: The dimension tolerance in U Profiles is ± 3 mm

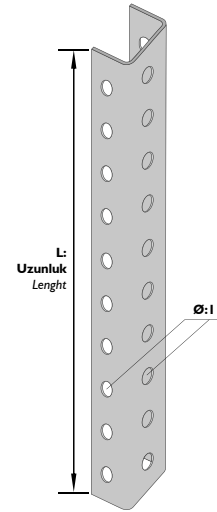
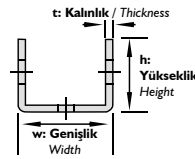
! The indicated weights are the weights before fabrication.

! U Profiles are convenient for M8 bolt, nut and M8 or M10 steel anchor usage.

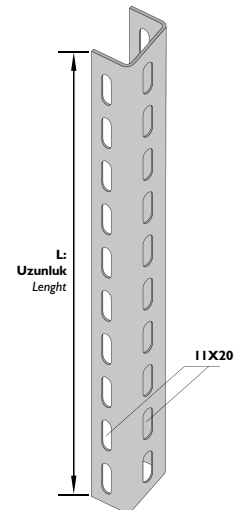
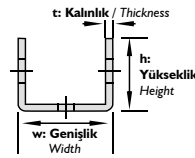
U PROFİL KONSOLLARI
U PROFİLES BRACKETS



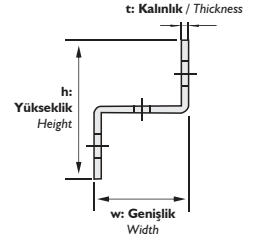
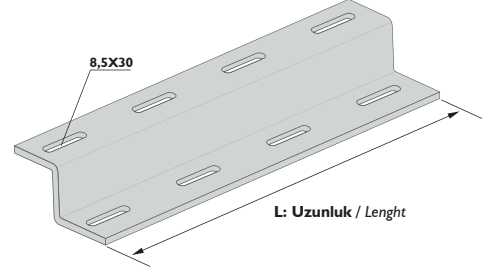
U PROFİL
U PROFILE



U PROFİL
U PROFILE



Sipariş Kodu (Order Code)	w (mm)	h (mm)	t (mm)	L (mm)	Kg/Adet (Kg/Pcs.)
AP-ZT10	40	80	1,50	100	0,126
AP-ZT12	40	80	1,50	120	0,152
AP-ZT15	40	80	1,50	150	0,190
AP-ZT20	40	80	1,50	200	0,254
AP-ZT25	40	80	2,00	250	0,396
AP-ZT30	40	30	2,00	300	0,475
AP-ZT40	40	30	2,00	400	0,633
AP-ZT50	40	30	2,00	500	0,791
AP-ZT60	40	30	2,00	600	0,950
AP-ZT100	40	30	2,00	1000	1,583

Z PROFİLLER
Z PROFILES

AÇIKLAMALAR / INSTRUCTIONS :

Not: Z Profillerde ölçü toleransı ± 3 mm.'dir.

! Belirtilen ağırlıklar kesim ağırlıklarıdır.

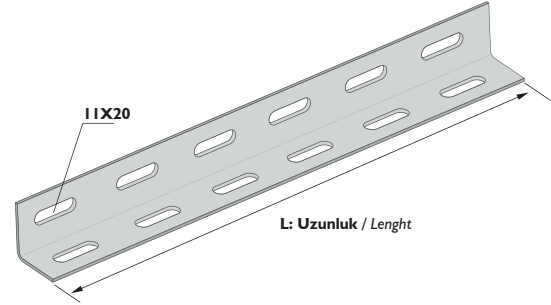
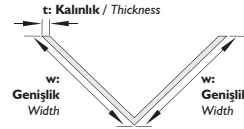
! Profiller, Metrik 10 cıvata, somun ve Çelik Dübel kullanımına uygundur.

Note: The dimension tolerance in Z Profiles is ± 3 mm

! The indicated weights are the weights before fabrication.

! Z Profiles are convenient for M10 bolt, nut and steel anchor usage.

Sipariş Kodu (Order Code)	w (mm)	t (mm)	L (mm)	Kg/Adet (Kg/Pcs.)
AP-LA30-3	30	3,00	2000	2,543
AP-LA30-4	30	4,00	2000	3,391
AP-LA40-3	40	3,00	2000	3,485
AP-LA40-4	40	4,00	2000	4,647
AP-LA40-5	40	5,00	2000	5,809
AP-LA50-4	50	4,00	2000	5,903
AP-LA50-5	50	5,00	2000	7,379

L PROFİLLER
L PROFILES

AÇIKLAMALAR / INSTRUCTIONS :

Not: L Profillerde ölçü toleransı ± 3 mm.'dir.

! Belirtilen ağırlıklar kesim ağırlıklarıdır.

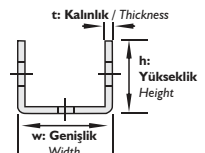
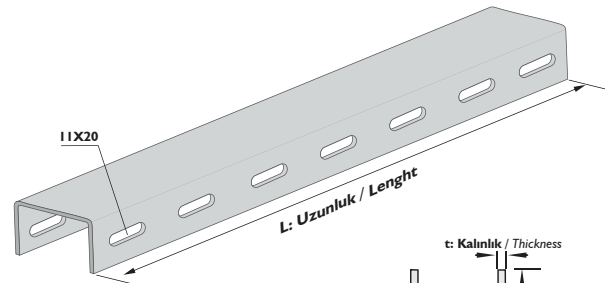
! Profiller, Metrik 10 cıvata, somun ve Çelik Dübel kullanımına uygundur.

Note: The dimension tolerance in L Profiles is ± 3 mm

! The indicated weights are the weights before fabrication.

! L Profiles are convenient for M10 bolt, nut and steel anchor usage.

Sipariş Kodu (Order Code)	w (mm)	h (mm)	t (mm)	L (mm)	Kg/Adet (Kg/Pcs.)
AP-UA30-3	30	30	3,00	2000	3,815
AP-UA30-4	30	30	4,00	2000	5,087
AP-UA40-3	40	40	3,00	2000	5,087
AP-UA40-4	40	40	4,00	2000	6,594
AP-UA40-5	40	40	5,00	2000	8,243
AP-UA50-4	50	50	4,00	2000	8,541
AP-UA50-5	50	50	5,00	2000	10,205

U PROFİLLER
U PROFILES

AÇIKLAMALAR / INSTRUCTIONS :

Not: U Profillerde ölçü toleransı ± 3 mm.'dir.

! Belirtilen ağırlıklar kesim ağırlıklarıdır.

! Profiller, Metrik 10 cıvata, somun ve Çelik Dübel kullanımına uygundur.

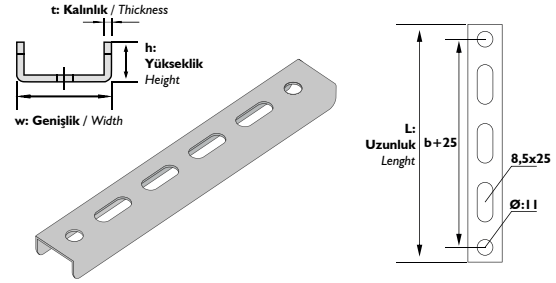
Note: The dimension tolerance in U Profiles is ± 3 mm

! The indicated weights are the weights before fabrication.

! U Profiles are convenient for M10 bolt, nut and steel anchor usage.

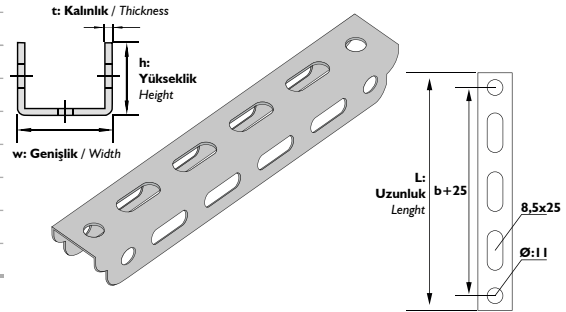
Sipariş Kodu (Order Code)	w (mm)	h (mm)	b (mm)	t (mm)	L (mm)	Kg/Adet (Kg/Pcs.)
AP-TKM10	30	15	100	1,50	154	0,102
AP-TKM12	30	15	120	1,50	174	0,114
AP-TKM15	30	15	150	1,50	204	0,134
AP-TKM20	30	15	200	1,50	254	0,165
AP-TKM25	30	15	250	1,50	304	0,197
AP-TKM30	30	15	300	1,50	354	0,229
AP-TKM40	30	15	400	1,50	454	0,292
AP-TKM50	30	15	500	1,50	554	0,356
AP-TKM60	30	15	600	1,50	654	0,420

U TİPİ TİJLİ TAŞIYICI (Hafif Tip)
U TYPE CARRIER (Light Type)



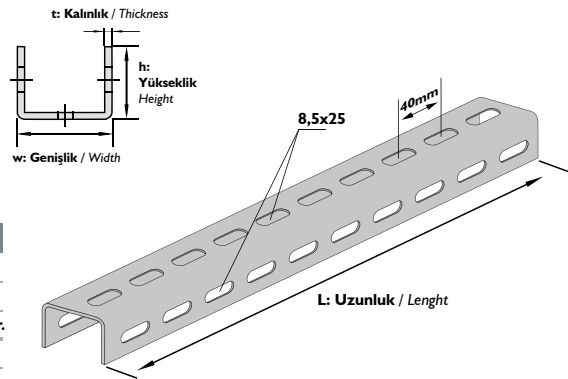
Sipariş Kodu (Order Code)	w (mm)	h (mm)	b (mm)	t (mm)	L (mm)	Kg/Adet (Kg/Pcs.)
AP-TTU10	30	30	100	1,50	154	0,160
AP-TTU12	30	30	120	1,50	174	0,180
AP-TTU15	30	30	150	1,50	204	0,210
AP-TTU20	30	30	200	1,50	254	0,260
AP-TTU25	30	30	250	1,50	304	0,310
AP-TTU30	30	30	300	1,50	354	0,360
AP-TTU40	30	30	400	1,50	454	0,460
AP-TTU50	30	30	500	1,50	554	0,560
AP-TTU60	30	30	600	1,50	654	0,661

U TİPİ TİJLİ TAŞIYICI (Ağır Tip)
U TYPE CARRIER (Heavy Type)



Sipariş Kodu (Order Code)	w (mm)	h (mm)	t (mm)	L (mm)	Kg/Mt. (Kg/Mt.)
AP-TTU100	30	30	1,50	1000	1,001
AP-TTU150	30	30	1,50	1500	1,501
AP-TTU200	30	30	1,50	2000	2,002
AP-TTU250	30	30	1,50	2500	2,502

U TİPİ TİJLİ TAŞIYICI (Ağır Tip)
U TYPE CARRIER (Heavy Type)



AÇIKLAMALAR / INSTRUCTIONS :

Not: U Tipi Çift Tijli Taşıyıcılarda ölçü toleransı ± 3 mm.'dir.

! Belirtilen ağırlıklar kesim ağırlıklarıdır.

! U Tipi Çift Tijli Taşıyıcılarda, Metrik 8, M10 cıvata, somun ve Askı Tiji kullanımına uygundur.

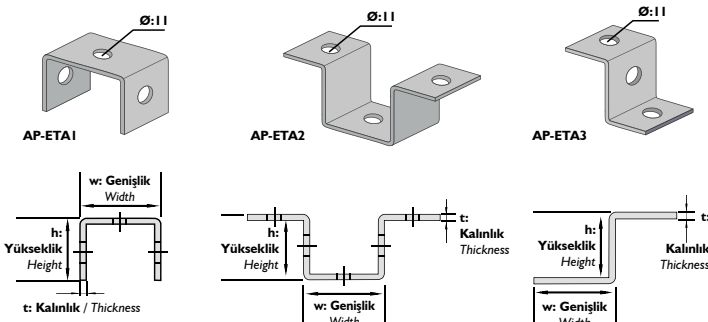
Note: The dimension tolerance in U type double threaded rod is ± 3 mm

! The indicated weights are the weights before fabrication.

! U type double threaded rod carriers are convenient for M8, M10 bolt, nut and Threaded rod usage.

Sipariş Kodu (Order Code)	h (mm)	w (mm)	t (mm)	Kg/Adet (Kg/Pcs.)
AP-ETA1	40	40	3,00	0,113
AP-ETA2	40	40	3,00	0,188
AP-ETA3	40	40	3,00	0,113
AP-VA	100	90	2,00	0,103

TİJLİ TAVAN MONTAJ ELEMANLARI
CEILING BRACKET



AÇIKLAMALAR / INSTRUCTIONS :

Not: Ölçü toleransı ± 3 mm.'dir.

! Belirtilen ağırlıklar kesim ağırlıklarıdır.

Note: The dimension tolerance is ± 3 mm

! The indicated weights are the weights before fabrication.

Sipariş Kodu (Order Code)	w (mm)	h (mm)	t (mm)	Kg/Adet (Kg/Pcs.)
AP-KKT05T	55	60	1,20	0,069
AP-KKT07T	75	60	1,20	0,077
AP-KKT10T	105	60	1,20	0,089
AP-KKT12T	125	60	1,20	0,097
AP-KKT15T	155	60	1,50	0,136
AP-KKT20T	205	60	1,50	0,161

➤ **AÇIKLAMALAR / INSTRUCTIONS :**

Not: Tek Tijli Taşıyıcılarda ölçü toleransı ± 3 mm.'dir.

! Belirtilen ağırlıklar kesim ağırlıklarıdır.

! Tek Tijli Taşıyıcılar, Metrik 8 civata, somun ve M8 yada M10 Askı Tiji ve somun kullanımına uygundur.

Note: The dimension tolerance in Tray Carrier is ± 3 mm

! The indicated weights are the weights before fabrication.

! Tray Carriers Are Convenient For M8 Bolt, Nut And M8 or M10 Nut, threaded Rod Usage.

Sipariş Kodu (Order Code)	w (mm)	b (mm)	h (mm)	t (mm)	Kg/Adet (Kg/Pcs.)
AP-KKT05Y	60	45	100	3,00	0,176
AP-KKT07Y	80	55	100	3,00	0,203
AP-KKT10Y	110	70	100	3,00	0,242
AP-KKT12Y	130	80	100	3,00	0,269
AP-KKT15Y	160	95	100	3,00	0,308
AP-KKT20Y	210	130	100	3,00	0,383

➤ **AÇIKLAMALAR / INSTRUCTIONS :**

Not: Tek Tijli Taşıyıcılarda ölçü toleransı ± 3 mm.'dir.

! Belirtilen ağırlıklar kesim ağırlıklarıdır.

! Tek Tijli Taşıyıcılar, Metrik 8 civata, somun ve M8 yada M10 Askı Tiji ve somun kullanımına uygundur.

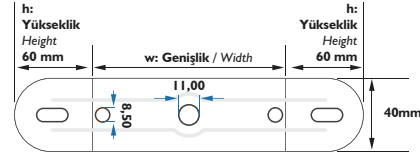
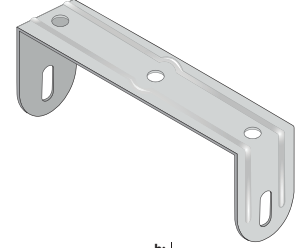
Note: The dimension tolerance in Tray Carrier is ± 3 mm

! The indicated weights are the weights before fabrication.

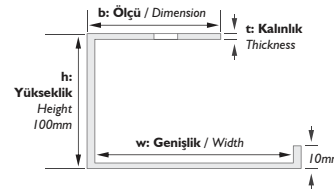
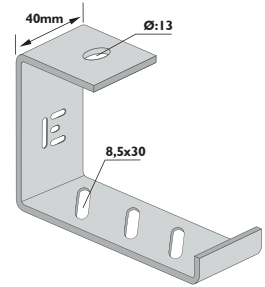
! Tray Carriers Are Convenient For M8 Bolt, Nut And M8 or M10 Nut, threaded Rod Usage.

Sipariş Kodu (Order Code)	Çap (inch)	Sıkma Ölçüsü (tight dia.)
AP-BK12	1,4"	12-16
AP-BK16	3/8"	16-20
AP-BK20	1/2"	20-25
AP-BK25	3/4"	25-30
AP-BK31	1"	31-38
AP-BK38	1 1/4"	38-45
AP-BK45	1 1/2"	45-52
AP-BK59	2"	59-66
AP-BK66	2 1/4"	66-75
AP-BK75	2 1/2"	75-84
AP-BK84	3"	84-93
AP-BK93	3 1/2"	93-101
AP-BK110	4"	110-119
AP-BK129	4 1/2"	129-137
AP-BK137	5"	137-145
AP-BK155	5 1/2"	155-163
AP-BK163	6"	163-172
AP-BK197	7"	197-207
AP-BK207	8"	207-219
AP-BK246	10"	246-255

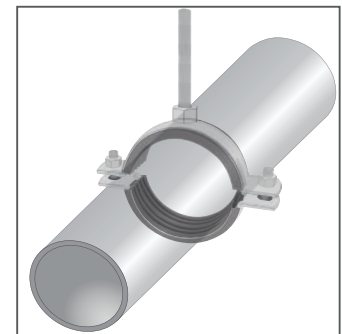
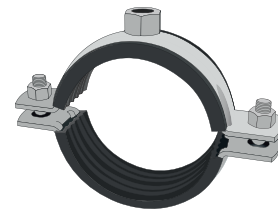
TIJLİ TAŞIYICI
 TRAY CARRIERS (With Threaded Rods)



TIJLİ TAŞIYICI
 TRAY CARRIERS (With Threaded Rods)



LASTİKLİ BORU KELEPÇELERİ
 PIPE CLAMPS WITH RUBBER

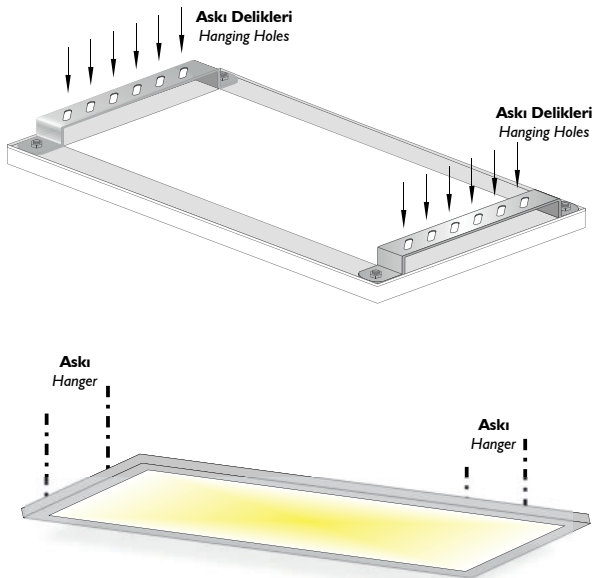


Sipariş Kodu (Order Code)	w (mm)	h (mm)	t (mm)	Kg/Adet (Kg/Pcs.)
AP-YDT10/30	100	30	3,00	0,194
AP-YDT12/30	120	30	3,00	0,211
AP-YDT15/30	150	30	3,00	0,238
AP-YDT20/30	200	30	3,00	0,282
AP-YDT25/30	250	30	3,00	0,326
AP-YDT30/30	300	30	3,00	0,370
AP-YDT40/30	400	30	3,00	0,458
AP-YDT50/30	500	30	3,00	0,546
AP-YDT60/30	600	30	3,00	0,634

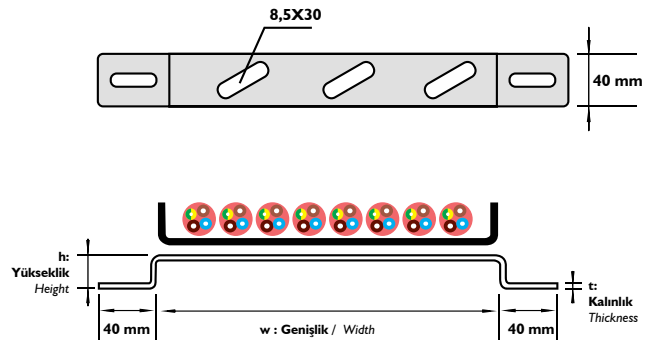
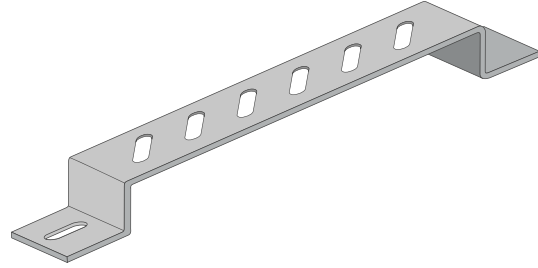
Sipariş Kodu (Order Code)	w (mm)	h (mm)	t (mm)	Kg/Adet (Kg/Pcs.)
AP-YDT10/40	100	40	3,00	0,211
AP-YDT12/40	120	40	3,00	0,229
AP-YDT15/40	150	40	3,00	0,255
AP-YDT20/40	200	40	3,00	0,299
AP-YDT25/40	250	40	3,00	0,343
AP-YDT30/40	300	40	3,00	0,387
AP-YDT40/40	400	40	3,00	0,475
AP-YDT50/40	500	40	3,00	0,563
AP-YDT60/40	600	40	3,00	0,651

Sipariş Kodu (Order Code)	w (mm)	h (mm)	t (mm)	Kg/Adet (Kg/Pcs.)
AP-YDT10/50	100	50	3,00	0,229
AP-YDT12/50	120	50	3,00	0,247
AP-YDT15/50	150	50	3,00	0,273
AP-YDT20/50	200	50	3,00	0,317
AP-YDT25/50	250	50	3,00	0,361
AP-YDT30/50	300	50	3,00	0,405
AP-YDT40/50	400	50	3,00	0,493
AP-YDT50/50	500	50	3,00	0,581
AP-YDT60/50	600	50	3,00	0,669

Sipariş Kodu (Order Code)	a (mm)	b (mm)	h (mm)	t (mm)	Kg/Adet (Kg/Pcs.)
AP-LF30/30	290	325	30	2,00	0,222
AP-LF60/30	590	625	30	2,00	0,380



OMEGA YER VE DUVAR TESPİT ELEMANI
WALL AND FLOOR FIXING BRACKET



► AÇIKLAMALAR / INSTRUCTIONS :

Not: Omega yer ve duvar tespit elemanlarında ölçü toleransı ± 3 mm.'dir.

! Belirtilen ağırlıklar kesim ağırlıklarıdır.

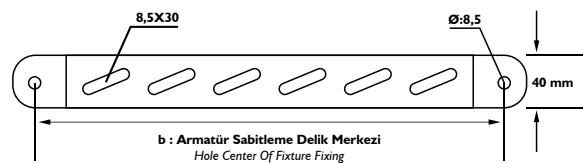
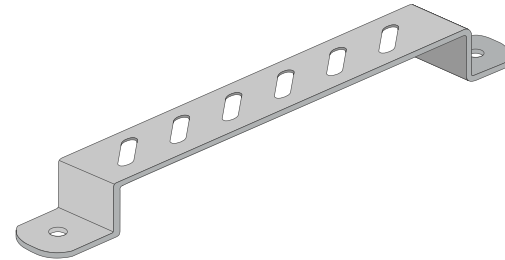
! Omega yer ve duvar tespit elemanları, Metrik 8 cıvata, somun ve çelik dübel kullanımına uygundur.

Note: The dimension tolerance in U type double threaded rod is ± 3 mm

! The indicated weights are the weights before fabrication.

! Omega Fixing Brackets are convenient for M8 bolt, nut and steel anchor usage.

KANALA ARMATÜR SABİTLEME ELEMANI
FIXTURE FIXING UNIT FOR CABLE TRAY



► AÇIKLAMALAR / INSTRUCTIONS :

Not: Omega yer ve duvar tespit elemanlarında ölçü toleransı ± 3 mm.'dir.

! Belirtilen ağırlıklar kesim ağırlıklarıdır.

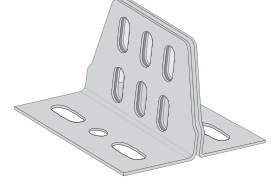
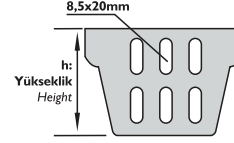
! Omega yer ve duvar tespit elemanları, Metrik 8 cıvata, somun ve çelik dübel kullanımına uygundur.

Note: The dimension tolerance in U type double threaded rod is ± 3 mm

! The indicated weights are the weights before fabrication.

! Omega Fixing Brackets are convenient for M8 bolt, nut and steel anchor usage.

Sipariş Kodu (Order Code)	w (mm)	h (mm)	t (mm)	Kg/Adet (Kg/Pcs.)
AP-UTA3-IL	50	65	2,00	0,355

U - PROFİL ZEMİN DESTEĞİ
 U PROFILE FLOOR SUPPORT

AÇIKLAMALAR / INSTRUCTIONS :

Not: U ve Z Profil Zemin Destek Elemanlarında ölçü toleransı ± 3 mm.'dir.

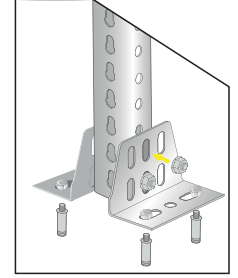
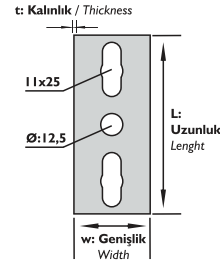
! Belirtilen ağırlıklar kesim ağırlıklarıdır.

! U ve Z Profil Zemin Destek Elemanları, Metrik 8 cıvata, somun ve Metrik 8 - 10 Çelik Dübel kullanımına uygundur.

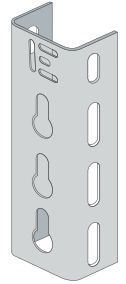
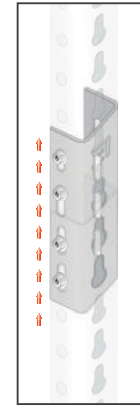
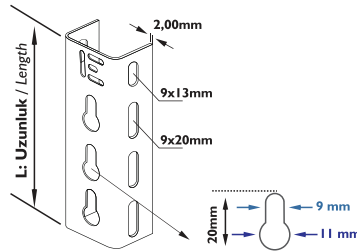
Note: Floor Support for U and Z Profiles The dimension tolerance in welded wall bracket is ± 3 mm

! The indicated weights are the weights before fabrication.

! Floor Support for U and Z Profiles are convenient for M8 bolt, nut and M 8-10 steel anchor usage.



Sipariş Kodu (Order Code)	w (mm)	h (mm)	t (mm)	L (mm)	Kg/Adet (Kg/Pcs.)
AP-UTTA3-IB	40	28	2,00	125	0,158

U - PROFİL EK ELEMANI(İçten)
 U PROFILE JOINT PIECE(Inside)

AÇIKLAMALAR / INSTRUCTIONS :

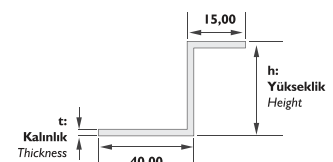
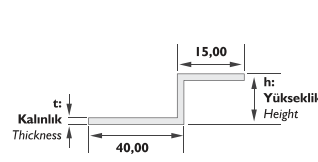
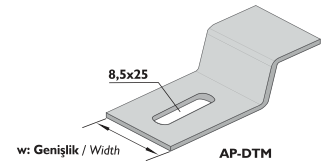
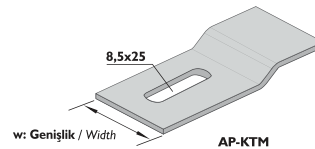
NOT: Ölçü toleransı ± 3 mm.'dir.

! Belirtilen ağırlıklar kesim ağırlıklarıdır.

NOTE: The dimension tolerance in ± 3 mm

! The indicated weights are the weights before fabrication.

Sipariş Kodu (Order Code)	w (mm)	h (mm)	t (mm)	Kg/Adet (Kg/Pcs.)
AP-KTM	40	2,00	2,00	0,026
AP-DTM	40	17,00	3,00	0,062

MERDİVENİ KONSOLA VE DUVARA TESPİT ELEMANI
 FIXING UNIT FOR THE LADDER TO BRACKET AND WALL

AÇIKLAMALAR / INSTRUCTIONS :

NOT: Ölçü toleransı ± 3 mm.'dir.

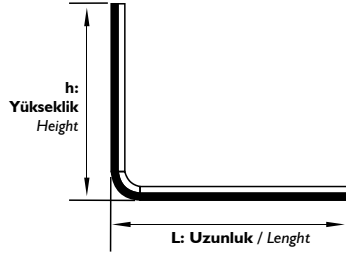
! Belirtilen ağırlıklar kesim ağırlıklarıdır.

NOTE: The dimension tolerance in ± 3 mm

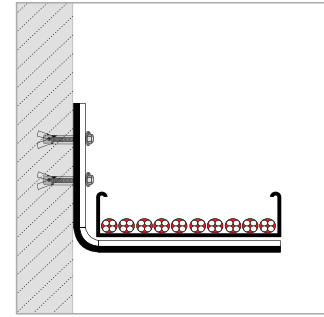
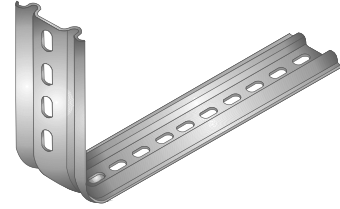
! The indicated weights are the weights before fabrication.

Sipariş Kodu (Order Code)	L (mm)	h (mm)	t (mm)	Kg/Adet (Kg/Pcs.)
AP-WAS10	100	130	2,00	0,251
AP-WAS12	120	130	2,00	0,272
AP-WAS15	150	130	2,00	0,303
AP-WAS20	200	130	2,00	0,356
AP-WAS25	250	130	2,00	0,408
AP-WAS30	300	130	2,00	0,460

t : Kalınlık Thickness



W ASKI ELEMANI
W HANGING SUPPORTS



AÇIKLAMALAR / INSTRUCTIONS :

NOT: Ölçü toleransı ± 3 mm.'dir.

! Belirtilen ağırlıklar kesim ağırlıktadır.

! Metrik 8 civata, somun ve çelik dübel kullanımına uygundur.

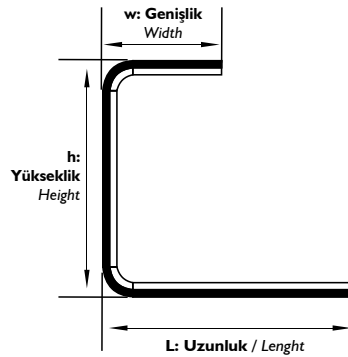
NOTE: The dimension tolerance in ± 3 mm

! The indicated weights are the weights before fabrication.

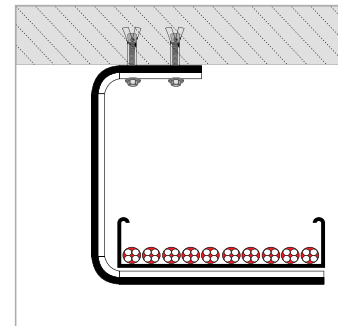
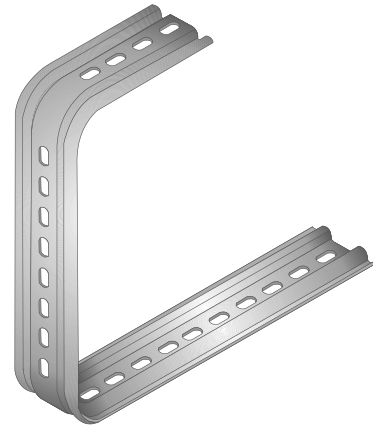
! Convenient for M8 bolt, nut and steel anchor usage.

Sipariş Kodu (Order Code)	w (mm)	L (mm)	h (mm)	t (mm)	Kg/Adet (Kg/Pcs.)
AP-WAS10Y	130	100	260	2,00	0,523
AP-WAS12Y	130	120	260	2,00	0,544
AP-WAS15Y	130	150	260	2,00	0,575
AP-WAS20Y	130	200	260	2,00	0,627
AP-WAS25Y	130	250	260	2,00	0,680
AP-WAS30Y	130	300	260	2,00	0,732

t : Kalınlık Thickness



W ASKI ELEMANI
W HANGING SUPPORTS



AÇIKLAMALAR / INSTRUCTIONS :

NOT: Ölçü toleransı ± 3 mm.'dir.

! Belirtilen ağırlıklar kesim ağırlıktadır.

! Metrik 8 civata, somun ve çelik dübel kullanımına uygundur.

NOTE: The dimension tolerance in ± 3 mm

! The indicated weights are the weights before fabrication.

! Convenient for M8 bolt, nut and steel anchor usage.

Sipariş Kodu (Order Code)	L (mm)	h (mm)	t (mm)	Kg/Adet (Kg/Pcs.)
AP-WAS40L	400	130	2,00	0,565
AP-WAS50L	500	130	2,00	0,669
AP-WAS60L	600	130	2,00	0,774
AP-WAS70L	700	130	2,00	0,878
AP-WAS80L	800	130	2,00	0,983
AP-WAS90L	900	130	2,00	1,087
AP-WAS100L	1000	130	2,00	1,192

t : Kalınlık Thickness

> AÇIKLAMALAR / INSTRUCTIONS :

NOT: Ölçü toleransı ± 3 mm.'dir.

! Belirtilen ağırlıklar kesim ağırlıklardır.

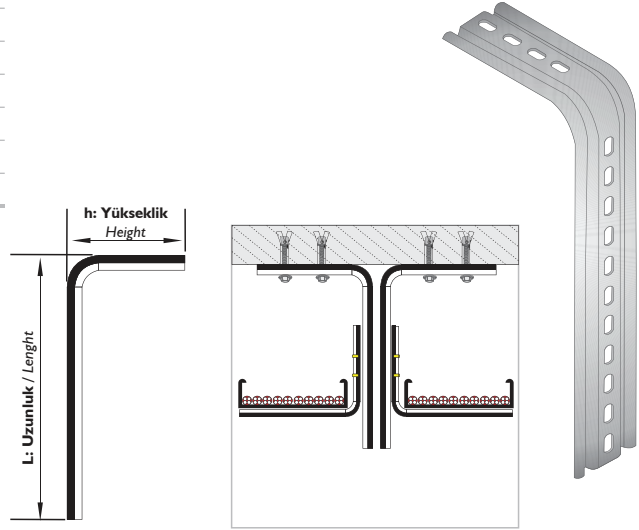
! Metrik 8 cıvata, somun ve çelik dübel kullanımına uygundur.

NOTE: The dimension tolerance in ± 3 mm

! The indicated weights are the weights before fabrication.

! Convenient for M8 bolt, nut and steel anchor usage.

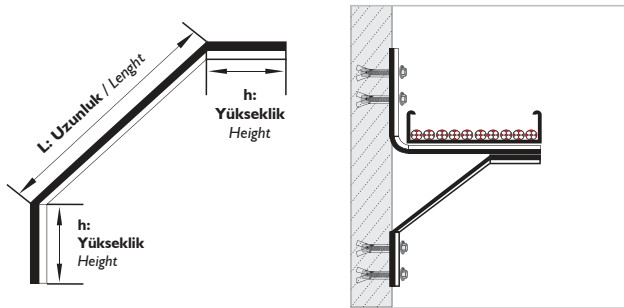
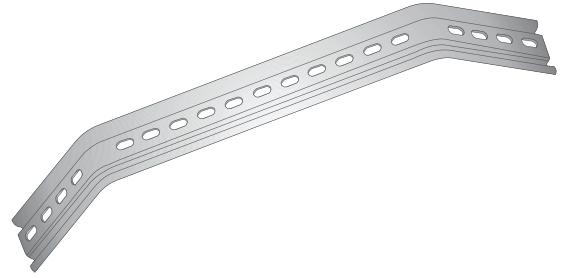
W TAVAN ASKI ELEMANI
 W CEILING HANGING UNIT



Sipariş Kodu (Order Code)	L (mm)	h (mm)	t (mm)	Kg/Adet (Kg/Pcs.)
AP-WAS40V	400	100	2,00	0,627
AP-WAS50V	500	100	2,00	0,732
AP-WAS60V	600	100	2,00	0,836
AP-WAS70V	700	100	2,00	0,941
AP-WAS80V	800	100	2,00	1,046

t : Kalınlık Thickness

W TAVAN ASKI ELEMANI
 W CEILING HANGING UNIT



> AÇIKLAMALAR / INSTRUCTIONS :

NOT: Ölçü toleransı ± 3 mm.'dir.

! Belirtilen ağırlıklar kesim ağırlıklardır.

! Metrik 8 cıvata, somun ve çelik dübel kullanımına uygundur.

NOTE: The dimension tolerance in ± 3 mm

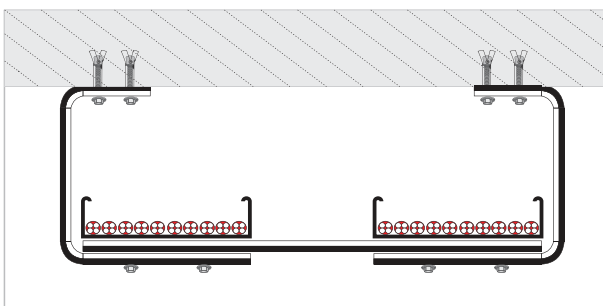
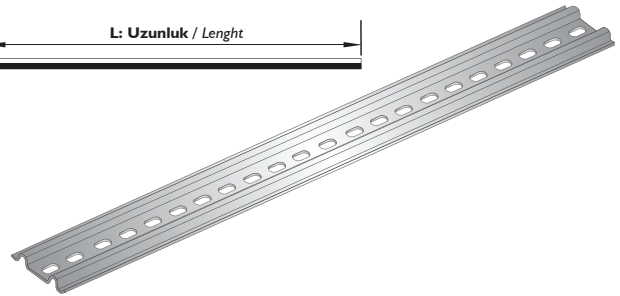
! The indicated weights are the weights before fabrication.

! Convenient for M8 bolt, nut and steel anchor usage.

Sipariş Kodu (Order Code)	L (mm)	t (mm)	Kg/Adet (Kg/Pcs.)
AP-WAS50	500	2,00	0,523
AP-WAS100	1000	2,00	1,046
AP-WAS150	1500	2,00	1,569

t : Kalınlık Thickness

W PROFİL
 W PROFILES



> AÇIKLAMALAR / INSTRUCTIONS :

NOT: Ölçü toleransı ± 3 mm.'dir.

! Belirtilen ağırlıklar kesim ağırlıklardır.

! Metrik 8 cıvata, somun ve çelik dübel kullanımına uygundur.

NOTE: The dimension tolerance in ± 3 mm

! The indicated weights are the weights before fabrication.

! Convenient for M8 bolt, nut and steel anchor usage.

Sipariş Kodu (Order Code)	h (mm)	w (mm)	t (mm)	s (mm)	L (mm)	Kg/Adet (Kg/Pcs.)
AP-I 80-20	42	80	5,00	3,90	200	1,180
AP-I 80-30	42	80	5,00	3,90	300	1,872
AP-I 80-40	42	80	5,00	3,90	400	2,375
AP-I 80-50	42	80	5,00	3,90	500	2,970
AP-I 80-60	42	80	5,00	3,90	600	3,564
AP-I 80-70	42	80	5,00	3,90	700	4,158
AP-I 80-80	42	80	5,00	3,90	800	4,751
AP-I 80-90	42	80	5,00	3,90	900	5,345
AP-I 80-100	42	80	5,00	3,90	1000	5,939
AP-I 80-110	42	80	5,00	3,90	1100	6,533
AP-I 80-120	42	80	5,00	3,90	1200	7,127
AP-I 80-130	42	80	5,00	3,90	1300	7,721
AP-I 80-140	42	80	5,00	3,90	1400	8,315
AP-I 80-150	42	80	5,00	3,90	1500	8,909
AP-I 80-160	42	80	5,00	3,90	1600	9,503
AP-I 80-170	42	80	5,00	3,90	1700	10,097
AP-I 80-180	42	80	5,00	3,90	1800	10,691
AP-I 80-190	42	80	5,00	3,90	1900	11,285
AP-I 80-200	42	80	5,00	3,90	2000	11,879
AP-I 80-300	42	80	5,00	3,90	3000	17,817
AP-I 80-400	42	80	5,00	3,90	4000	23,756
AP-I 80-500	42	80	5,00	3,90	5000	29,695
AP-I 80-600	42	80	5,00	3,90	6000	35,634

Sipariş Kodu (Order Code)	h (mm)	w (mm)	t (mm)	s (mm)	L (mm)	Kg/Adet (Kg/Pcs.)
AP-IT 80-20	42	80	5,00	3,90	200	1,824
AP-IT 80-30	42	80	5,00	3,90	300	2,418
AP-IT 80-40	42	80	5,00	3,90	400	3,012
AP-IT 80-50	42	80	5,00	3,90	500	3,606
AP-IT 80-60	42	80	5,00	3,90	600	4,199
AP-IT 80-70	42	80	5,00	3,90	700	4,793
AP-IT 80-80	42	80	5,00	3,90	800	5,387
AP-IT 80-90	42	80	5,00	3,90	900	5,981
AP-IT 80-100	42	80	5,00	3,90	1000	6,575
AP-IT 80-110	42	80	5,00	3,90	1100	7,169
AP-IT 80-120	42	80	5,00	3,90	1200	7,763
AP-IT 80-130	42	80	5,00	3,90	1300	8,357
AP-IT 80-140	42	80	5,00	3,90	1400	8,951
AP-IT 80-150	42	80	5,00	3,90	1500	9,545
AP-IT 80-160	42	80	5,00	3,90	1600	10,139
AP-IT 80-170	42	80	5,00	3,90	1700	10,733
AP-IT 80-180	42	80	5,00	3,90	1800	11,327
AP-IT 80-190	42	80	5,00	3,90	1900	11,921
AP-IT 80-200	42	80	5,00	3,90	2000	12,514
AP-IT 80-300	42	80	5,00	3,90	3000	18,454
AP-IT 80-400	42	80	5,00	3,90	4000	24,393
AP-IT 80-500	42	80	5,00	3,90	5000	30,332
AP-IT 80-600	42	80	5,00	3,90	6000	36,272

➤ AÇIKLAMALAR / INSTRUCTIONS :

Not: "I" Askılarda ölçü toleransı ± 3 mm.'dir.

! Belirtilen ağırlıklar kesim ağırlıklarıdır.

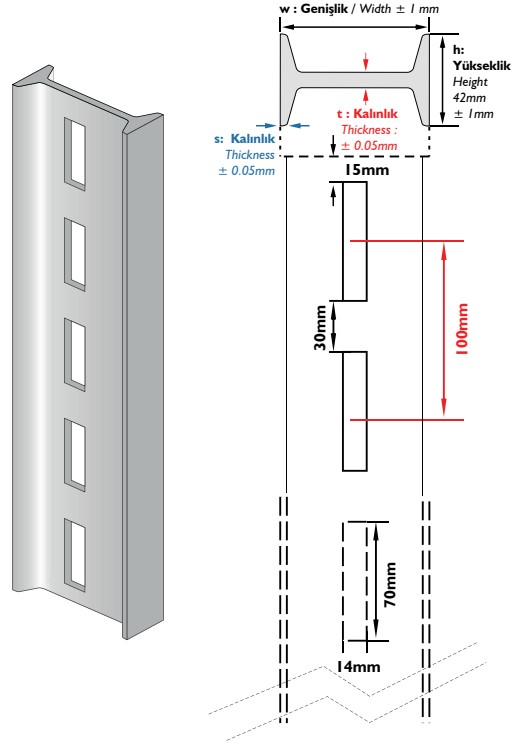
! "I" Askılarda, Metrik I2 civata, somun ve çelik dübel kullanımına uygundur.

Note: The dimension tolerance in for "I" Brackets are ± 3 mm

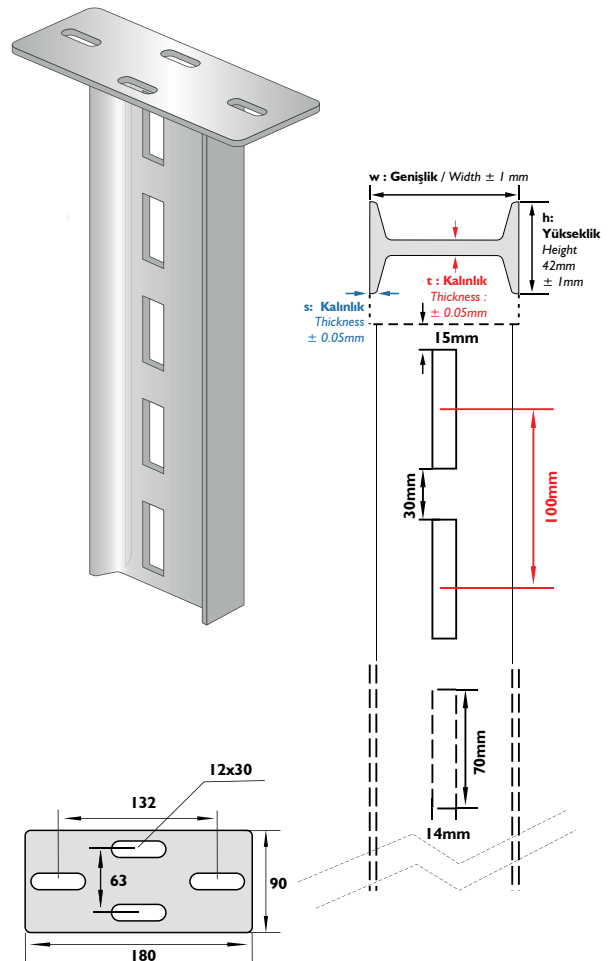
! The indicated weights are the weights before fabrication.

! "I" Brackets are convenient for M12 bolt, nut and steel anchor usage.

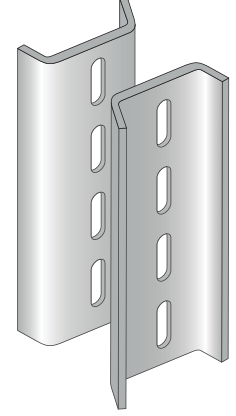
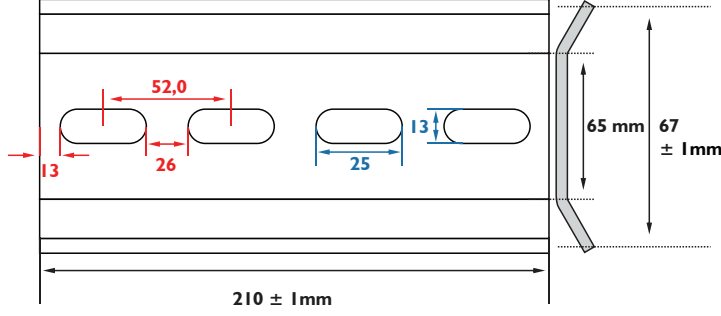
"I" DEMİR (NPI)
"I" IRON (Nickel Pic Iron)



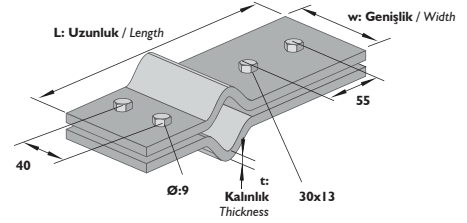
"I" DEMİR TAVAN DESTEĞİ
"I" IRON HEAD PLATE (Nickel Pic Iron)



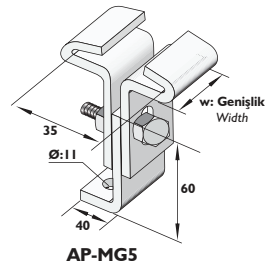
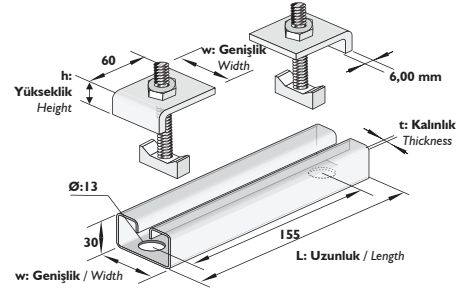
Sipariş Kodu (Order Code)	w (mm)	t (mm)	L (mm)	Kg/Adet (Kg/Pcs.)
AP-I 80BE I	68	3,00	210	0,692

I DEMİR BİRLEŞTİRME ELEMANI
 "I" IRON CONNECTION UNITE


Sipariş Kodu (Order Code)	w (mm)	t (mm)	L (mm)	Kg/Takım (Kg/Set.)
AP-B4	60	4,00	160	0,608

I DEMİR BİRLEŞTİRME ELEMANI
 "I" IRON CONNECTION UNITE


Sipariş Kodu (Order Code)	L (mm)	w (mm)	t (mm)	Kg/Takım (Kg/Set.)
AP-MG5	--	40	3,00	0,440
AP-MG6	160	40	3,00	0,520

I DEMİR BAĞLANTI ELEMANLARI
 "I" IRON CONNECTION UNITE

AP-MG5

AP-MG6

Sipariş Kodu (Order Code)	Açıklama (Description)
AP-180-PS	NPI DEMİR KORUMA PLASTİĞİ PLASTIC FOR NPI PROTECTION

I DEMİR KORUMA PLASTİĞİ
 PLASTIC FOR NPI PROTECTION

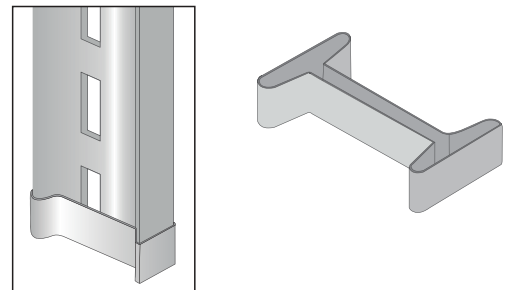
AÇIKLAMALAR / INSTRUCTIONS :

NOT: Ölçü toleransı ± 3 mm.'dir.

! Belirtilen ağırlıklar kesim ağırlıklardır.

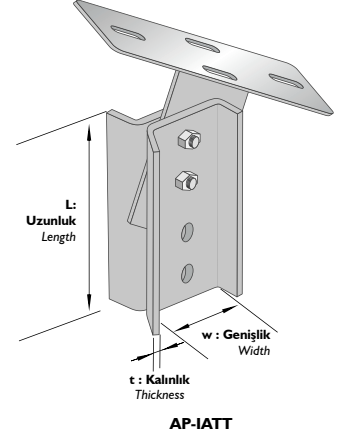
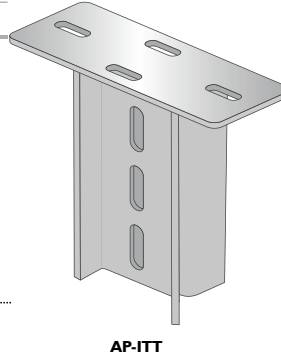
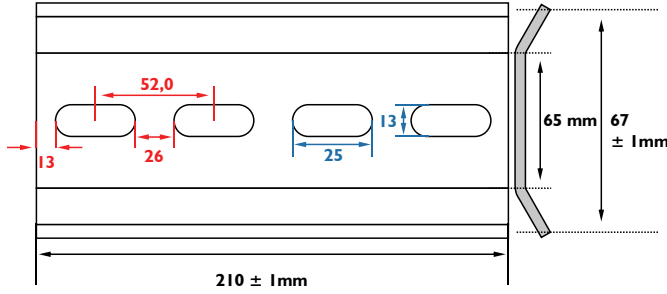
NOTE: The dimension tolerance in ± 3 mm

! The indicated weights are the weights before fabrication.



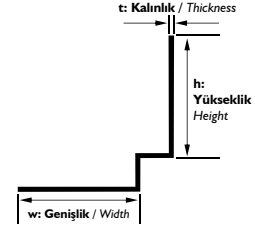
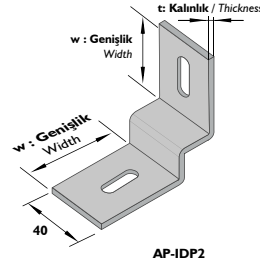
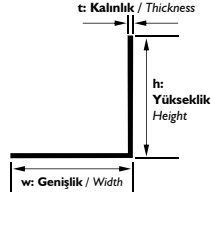
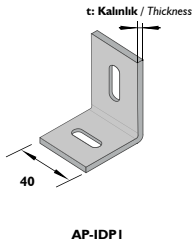
Sipariş Kodu (Order Code)	w (mm)	L (mm)	t (mm)	Kg/Adet (Kg/Pcs.)
AP-ITT	68	210	3,00	1,328
AP-IATT	68	210	3,00	1,858

I DEMİR TAVAN BAĞLANTI ELEMANLARI
"I" IRON CEILING HEAD PLATE



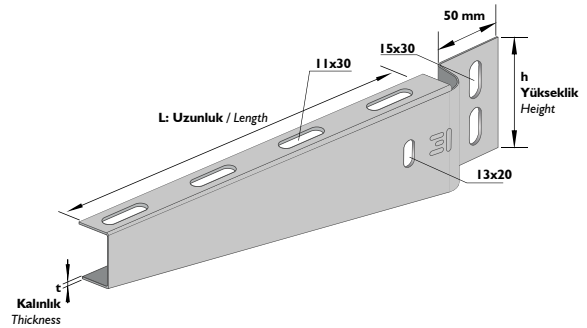
Sipariş Kodu (Order Code)	w (mm)	h (mm)	t (mm)	Kg/Adet (Kg/Pcs.)
AP-IDP1	63	63	4,00	0,188
AP-IDP2	60	60	4,00	0,237

I DEMİR TAVAN BAĞLANTI ELEMANLARI
"I" IRON CEILING HEAD PLATE



Sipariş Kodu (Order Code)	L (mm)	t (mm)	h (mm)	Kg/Adet (Kg/Pcs.)
AP-İK10	110	3,00	95	0,523
AP-İK12	130	3,00	95	0,530
AP-İK15	160	3,00	95	0,606
AP-İK20	210	3,00	95	0,733
AP-İK25	260	3,00	95	0,859
AP-İK30	310	3,00	95	0,985
AP-İK40	410	3,00	95	1,238
AP-İK50	510	3,00	95	1,491
AP-İK60	610	3,00	95	1,744

I DEMİR KONSOLLARI
"I" IRON BRACKETS



➤ AÇIKLAMALAR / INSTRUCTIONS :

NOT: Ölçü toleransı ± 3 mm.'dir.

! Belirtilen ağırlıklar kesim ağırlığıdır.

NOTE: The dimension tolerance in ± 3 mm

! The indicated weights are the weights before fabrication.

Sipariş Kodu (Order Code)	h (mm)	w (mm)	t (mm)	L (mm)	Kg/Adet (Kg/Pcs.)
AP-T 80-20	42	40	5,00	200	0,440
AP-T 80-30	42	40	5,00	300	0,660
AP-T 80-40	42	40	5,00	400	0,880
AP-T 80-50	42	40	5,00	500	1,100
AP-T 80-60	42	40	5,00	600	1,320
AP-T 80-70	42	40	5,00	700	1,540
AP-T 80-80	42	40	5,00	800	1,760
AP-T 80-90	42	40	5,00	900	1,980
AP-T 80-100	42	40	5,00	1000	2,200
AP-T 80-110	42	40	5,00	1100	2,420
AP-T 80-120	42	40	5,00	1200	2,640
AP-T 80-130	42	40	5,00	1300	2,860
AP-T 80-140	42	40	5,00	1400	3,080
AP-T 80-150	42	40	5,00	1500	3,300
AP-T 80-160	42	40	5,00	1600	3,520
AP-T 80-170	42	40	5,00	1700	3,740
AP-T 80-180	42	40	5,00	1800	3,960
AP-T 80-190	42	40	5,00	1900	4,180
AP-T 80-200	42	40	5,00	2000	4,400

➤ **AÇIKLAMALAR / INSTRUCTIONS :**

Not: "T" Askılarda ölçü toleransı ± 3 mm.'dir.

! Belirtilen ağırlıklar kesim ağırlıklarıdır.

! "T" Askılarda, Metrik I2 cıvata, somun ve çelik dübel kullanımına uygundur.

Note: The dimension tolerance in for "T" Brackets are ± 3 mm

! The indicated weights are the weights before fabrication.

! "T" Brackets are convenient for M12 bolt, nut and steel anchor usage.

Sipariş Kodu (Order Code)	h (mm)	w (mm)	t (mm)	L (mm)	Kg/Adet (Kg/Pcs.)
AP-TT 80-20	42	40	5,00	200	0,770
AP-TT 80-30	42	40	5,00	300	0,990
AP-TT 80-40	42	40	5,00	400	1,210
AP-TT 80-50	42	40	5,00	500	1,430
AP-TT 80-60	42	40	5,00	600	1,650
AP-TT 80-70	42	40	5,00	700	1,870
AP-TT 80-80	42	40	5,00	800	2,090
AP-TT 80-90	42	40	5,00	900	2,310
AP-TT 80-100	42	40	5,00	1000	2,530
AP-TT 80-110	42	40	5,00	1100	2,750
AP-TT 80-120	42	40	5,00	1200	2,970
AP-TT 80-130	42	40	5,00	1300	3,190
AP-TT 80-140	42	40	5,00	1400	3,410
AP-TT 80-150	42	40	5,00	1500	3,630
AP-TT 80-160	42	40	5,00	1600	3,850
AP-TT 80-170	42	40	5,00	1700	4,070
AP-TT 80-180	42	40	5,00	1800	4,290
AP-TT 80-190	42	40	5,00	1900	4,510
AP-TT 80-200	42	40	5,00	2000	4,730

➤ **AÇIKLAMALAR / INSTRUCTIONS :**

Not: "T" Askılarda ölçü toleransı ± 3 mm.'dir.

! Belirtilen ağırlıklar kesim ağırlıklarıdır.

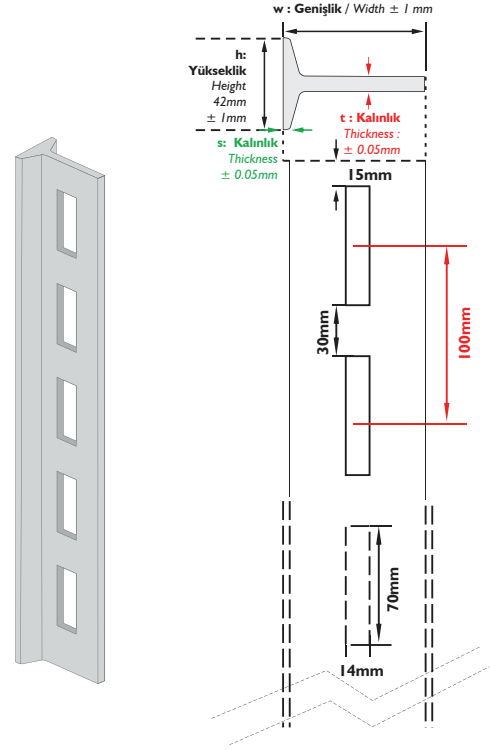
! "T" Askılarda, Metrik I2 cıvata, somun ve çelik dübel kullanımına uygundur.

Note: The dimension tolerance in for "T" Brackets are ± 3 mm

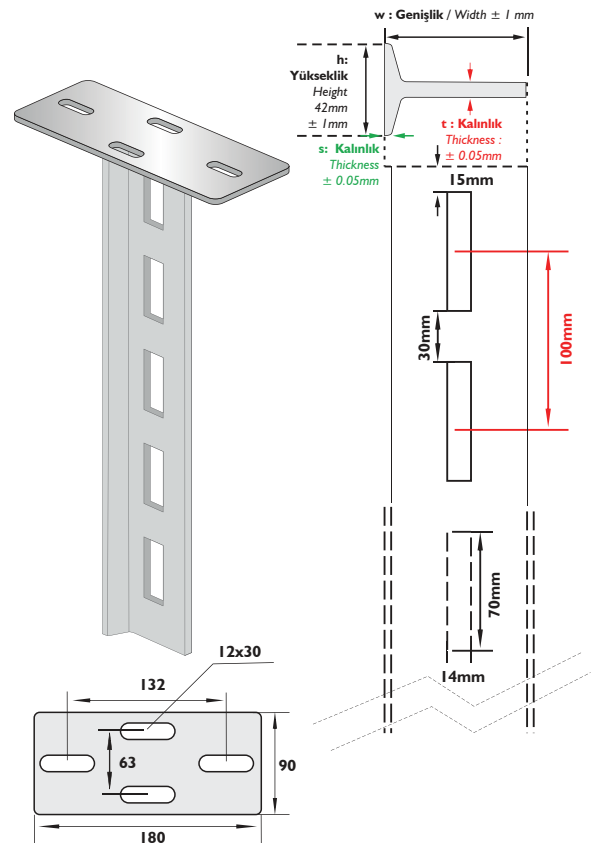
! The indicated weights are the weights before fabrication.

! "T" Brackets are convenient for M12 bolt, nut and steel anchor usage.

"T" DEMİR (NPI)
"T" IRON (Nickel Pic Iron)



"T" DEMİR (NPI)
"T" IRON (Nickel Pic Iron)



Sipariş Kodu (Order Code)	h (mm)	w (mm)	t (mm)	s (mm)	L (mm)	Kg/Adet (Kg/Pcs.)
AP-U 65-20	42	65	7,50	5,50	200	1,418
AP-U 65-30	42	65	7,50	5,50	300	2,127
AP-U 65-40	42	65	7,50	5,50	400	2,836
AP-U 65-50	42	65	7,50	5,50	500	3,545
AP-U 65-60	42	65	7,50	5,50	600	4,254
AP-U 65-70	42	65	7,50	5,50	700	4,963
AP-U 65-80	42	65	7,50	5,50	800	5,672
AP-U 65-90	42	65	7,50	5,50	900	6,381
AP-U 65-100	42	65	7,50	5,50	1000	7,090
AP-U 65-110	42	65	7,50	5,50	1100	7,799
AP-U 65-120	42	65	7,50	5,50	1200	8,508
AP-U 65-130	42	65	7,50	5,50	1300	9,217
AP-U 65-140	42	65	7,50	5,50	1400	9,926
AP-U 65-150	42	65	7,50	5,50	1500	10,635
AP-U 65-160	42	65	7,50	5,50	1600	11,344
AP-U 65-170	42	65	7,50	5,50	1700	12,053
AP-U 65-180	42	65	7,50	5,50	1800	12,762
AP-U 65-190	42	65	7,50	5,50	1900	13,471
AP-U 65-200	42	65	7,50	5,50	2000	14,180
AP-U 65-300	42	65	7,50	5,50	3000	21,270
AP-U 65-400	42	65	7,50	5,50	4000	28,360
AP-U 65-500	42	65	7,50	5,50	5000	35,450
AP-U 65-600	42	65	7,50	5,50	6000	42,540

Sipariş Kodu (Order Code)	h (mm)	w (mm)	t (mm)	s (mm)	L (mm)	Kg/Adet (Kg/Pcs.)
AP-UT 65-20	42	65	7,50	5,50	200	1,842
AP-UT 65-30	42	65	7,50	5,50	300	2,551
AP-UT 65-40	42	65	7,50	5,50	400	3,260
AP-UT 65-50	42	65	7,50	5,50	500	3,969
AP-UT 65-60	42	65	7,50	5,50	600	4,678
AP-UT 65-70	42	65	7,50	5,50	700	5,387
AP-UT 65-80	42	65	7,50	5,50	800	6,096
AP-UT 65-90	42	65	7,50	5,50	900	6,805
AP-UT 65-100	42	65	7,50	5,50	1000	7,514
AP-UT 65-110	42	65	7,50	5,50	1100	8,223
AP-UT 65-120	42	65	7,50	5,50	1200	8,932
AP-UT 65-130	42	65	7,50	5,50	1300	9,641
AP-UT 65-140	42	65	7,50	5,50	1400	10,350
AP-UT 65-150	42	65	7,50	5,50	1500	11,059
AP-UT 65-160	42	65	7,50	5,50	1600	11,768
AP-UT 65-170	42	65	7,50	5,50	1700	12,477
AP-UT 65-180	42	65	7,50	5,50	1800	13,186
AP-UT 65-190	42	65	7,50	5,50	1900	13,895
AP-UT 65-200	42	65	7,50	5,50	2000	14,604
AP-UT 65-300	42	65	7,50	5,50	3000	21,694
AP-UT 65-400	42	65	7,50	5,50	4000	28,784
AP-UT 65-500	42	65	7,50	5,50	5000	35,874
AP-UT 65-600	42	65	7,50	5,50	6000	42,964

➤ AÇIKLAMALAR / INSTRUCTIONS :

Not: "U" Askılarda ölçü toleransı ± 3 mm.'dir.

! Belirtilen ağırlıklar kesim ağırlıklarıdır.

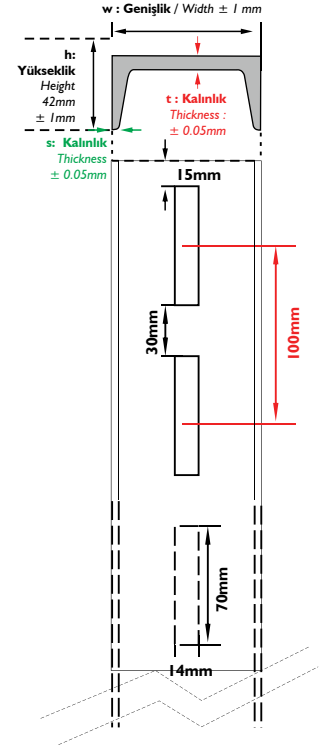
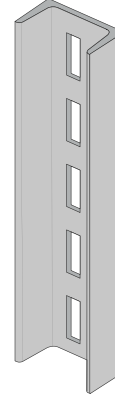
! "U" Askılarda, Metrik 12 civata, somun ve çelik dübel kullanımına uygundur.

Note: The dimension tolerance in for "U" Brackets are ± 3 mm

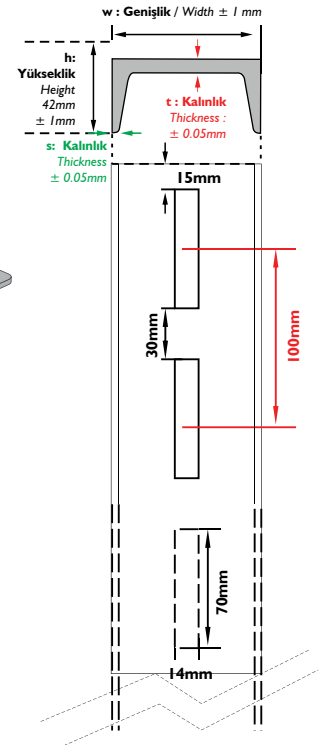
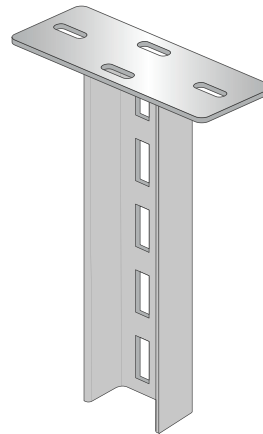
! The indicated weights are the weights before fabrication.

! "U" Brackets are convenient for M12 bolt, nut and steel anchor usage.

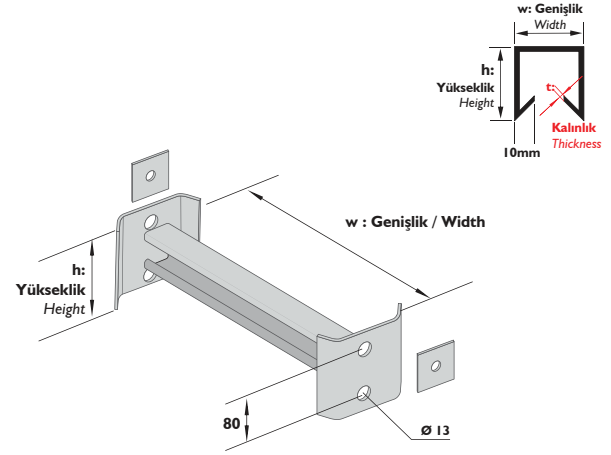
"NPU" DEMİR
"NPU" IRON



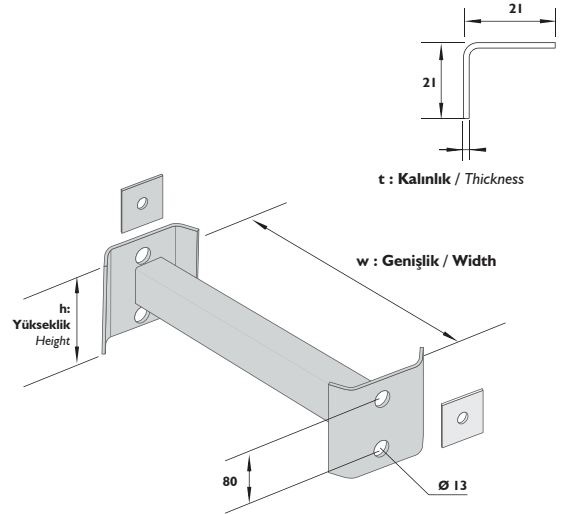
"NPU" DEMİR TAVAN DESTEĞİ
"NPU" IRON HEAD PLATE



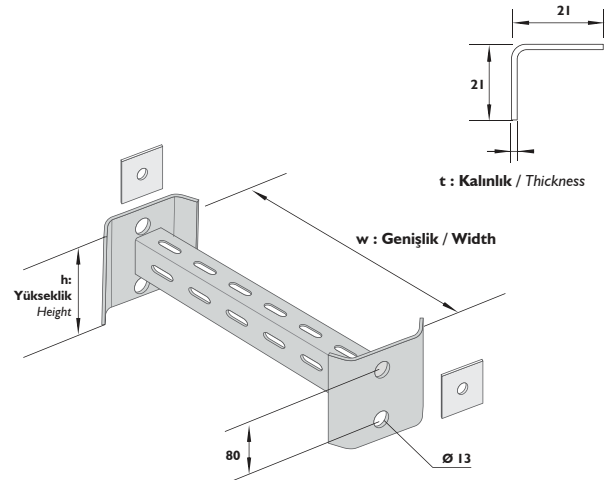
Sipariş Kodu (Order Code)	h (mm)	w (mm)	t (mm)	Kg/Adet (Kg/Pcs.)
AP-180-30C	100	300	2,00	0,738
AP-180-40C	100	400	2,00	0,836
AP-180-50C	100	500	2,00	0,935
AP-180-60C	100	600	2,00	1,034
AP-180-70C	100	700	2,00	1,133
AP-180-80C	100	800	2,00	1,232
AP-180-90C	100	900	2,00	1,331
AP-180-100C	100	1000	2,00	1,430
AP-180-110C	100	1100	2,00	1,529
AP-180-120C	100	1200	2,00	1,628

NPI MERDİVEN BASAMAĞI
 NPI LADDERS RUNG

ADS

Sipariş Kodu (Order Code)	h (mm)	w (mm)	t (mm)	Kg/Adet (Kg/Pcs.)
AP-180-30L	100	300	2,00	0,339
AP-180-40L	100	400	2,00	0,379
AP-180-50L	100	500	2,00	0,418
AP-180-60L	100	600	2,00	0,458
AP-180-70L	100	700	2,00	0,497
AP-180-80L	100	800	2,00	0,537
AP-180-90L	100	900	2,00	0,577
AP-180-100L	100	1000	2,00	0,616
AP-180-110L	100	1100	2,00	0,656
AP-180-120L	100	1200	2,00	0,695

NPI MERDİVEN BASAMAĞI
 NPI LADDERS RUNG


Sipariş Kodu (Order Code)	h (mm)	w (mm)	t (mm)	Kg/Adet (Kg/Pcs.)
AP-180-30DL	100	300	2,00	0,339
AP-180-40DL	100	400	2,00	0,379
AP-180-50DL	100	500	2,00	0,418
AP-180-60DL	100	600	2,00	0,458
AP-180-70DL	100	700	2,00	0,497
AP-180-80DL	100	800	2,00	0,537
AP-180-90DL	100	900	2,00	0,577
AP-180-100DL	100	1000	2,00	0,616
AP-180-110DL	100	1100	2,00	0,656
AP-180-120DL	100	1200	2,00	0,695

NPI MERDİVEN BASAMAĞI
 NPI LADDERS RUNG

AÇIKLAMALAR / INSTRUCTIONS :
NOT: Ölçü toleransı ± 3 mm.'dir.

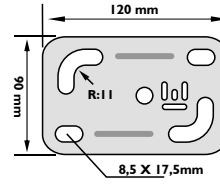
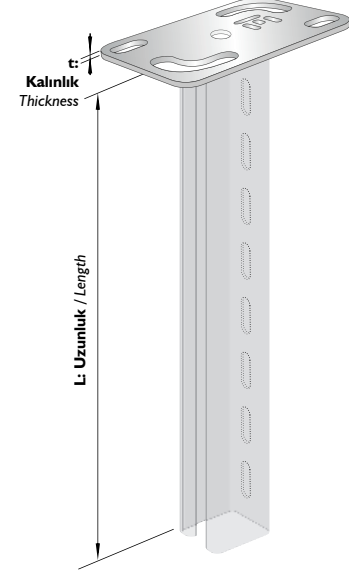
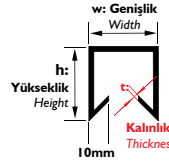
! Belirtilen ağırlıklar kesim ağırlıklarıdır.

NOTE: The dimension tolerance in ± 3 mm

! The indicated weights are the weights before fabrication.

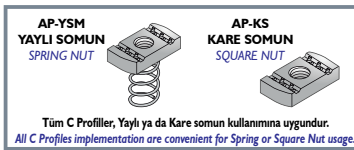
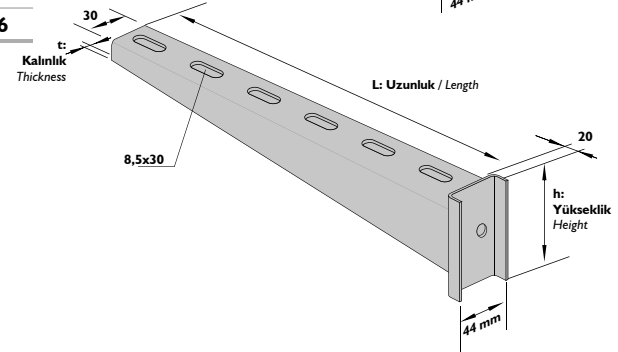
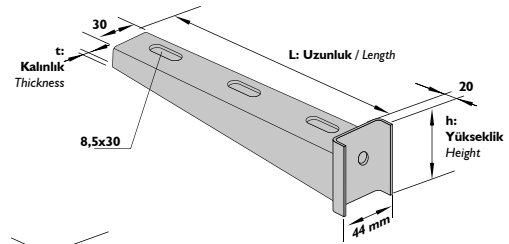
Sipariş Kodu (Order Code)	w x h (mm)	t (mm)	L (mm)	Kg/Adet (Kg/Pcs.)
AP-CT21-50	42x21	2,00	500	0,942
AP-CT21-100	42x21	2,00	1000	1,740
AP-CT21-150	42x21	2,00	1500	2,525
AP-CT21-200	42x21	2,00	2000	3,310
AP-CT42-50	42x42	2,00	500	1,269
AP-CT42-100	42x42	2,00	1000	2,368
AP-CT42-150	42x42	2,00	1500	3,467
AP-CT42-200	42x42	2,00	2000	4,567

C PROFİL TAVAN DESTEĞİ
C PROFILE CEILING SUPPORT



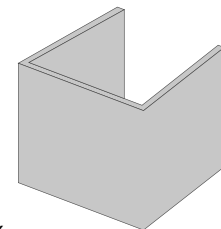
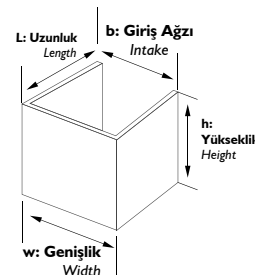
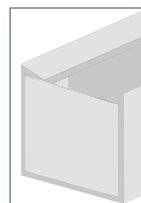
Sipariş Kodu (Order Code)	h (mm)	t (mm)	L (mm)	Kg/Adet (Kg/Pcs.)
AP-CK10	60	2,00	110	0,376
AP-CK12	60	2,00	160	0,407
AP-CK15	60	2,00	160	0,469
AP-CK20	60	2,00	210	0,530
AP-CK25	60	2,00	260	0,623
AP-CK30	100	2,00	310	0,684
AP-CK40	100	2,00	410	0,838
AP-CK50	100	2,00	510	0,992
AP-CK60	100	2,00	610	1,146

C PROFİL KONSOLLARI
C CLAMPING BRACKET



Sipariş Kodu (Order Code)	L (mm)	h (mm)	w (mm)	b (mm)	t (mm)	Kg/Adet (Kg/Pcs.)
AP-CKS04	20	19	40	35	1,20	0,015
AP-CKS05	20	38	40	35	1,20	0,030

C PROFİL SONLANDIRMA ELEMANI
C PROFILES END CAP



AÇIKLAMALAR / INSTRUCTIONS :

NOT: Ölçü toleransı ± 3 mm.'dir.

! Belirtilen ağırlıklar kesim ağırlığıdır.

NOTE: The dimension tolerance in ± 3 mm

! The indicated weights are the weights before fabrication.

Sipariş Kodu (Order Code)	L (mm)	h (mm)	w (mm)	t (mm)	Kg/Mt (Kg/Mt)
AP-CD21-200.15	2000	21	42	1,50	1,178
AP-CD21-200.20	2000	21	42	2,00	1,413
AP-CD21-200.30	2000	21	42	3,00	2,356
AP-CD21-250.15	2500	21	42	1,50	1,178
AP-CD21-250.20	2500	21	42	2,00	1,413
AP-CD21-250.30	2500	21	42	3,00	2,356
AP-CD21-300.15	3000	21	42	1,50	1,178
AP-CD21-300.20	3000	21	42	2,00	1,413
AP-CD21-300.30	3000	21	42	3,00	2,356

Sipariş Kodu (Order Code)	L (mm)	h (mm)	w (mm)	t (mm)	Kg/Mt (Kg/Mt)
AP-CD42-200.15	2000	42	42	1,50	1,649
AP-CD42-200.20	2000	42	42	2,00	1,978
AP-CD42-200.30	2000	42	42	3,00	3,297
AP-CD42-250.15	2500	42	42	1,50	1,649
AP-CD42-250.20	2500	42	42	2,00	1,978
AP-CD42-250.30	2500	42	42	3,00	3,297
AP-CD42-300.15	3000	42	42	1,50	1,649
AP-CD42-300.20	3000	42	42	2,00	1,978
AP-CD42-300.30	3000	42	42	3,00	3,297

Sipariş Kodu (Order Code)	L (mm)	h (mm)	w (mm)	t (mm)	Kg/Mt (Kg/Mt)
AP-CDD42-200.15	2000	42	42	1,50	1,649
AP-CDD42-200.20	2000	42	42	2,00	1,978
AP-CDD42-200.30	2000	42	42	3,00	3,297
AP-CDD42-250.15	2500	42	42	1,50	1,649
AP-CDD42-250.20	2500	42	42	2,00	1,978
AP-CDD42-250.30	2500	42	42	3,00	3,297
AP-CDD42-300.15	3000	42	42	1,50	1,649
AP-CDD42-300.20	3000	42	42	2,00	1,978
AP-CDD42-300.30	3000	42	42	3,00	3,297

Sipariş Kodu (Order Code)	L (mm)	h (mm)	w (mm)	t (mm)	Kg/Mt (Kg/Mt)
AP-CDD84-200.15	2000	84	42	1,50	3,298
AP-CDD84-200.20	2000	84	42	2,00	3,956
AP-CDD84-200.30	2000	84	42	3,00	6,594
AP-CDD84-250.15	2500	84	42	1,50	3,298
AP-CDD84-250.20	2500	84	42	2,00	3,956
AP-CDD84-250.30	2500	84	42	3,00	6,594
AP-CDD84-300.15	3000	84	42	1,50	3,298
AP-CDD84-300.20	3000	84	42	2,00	3,956
AP-CDD84-300.30	3000	84	42	3,00	6,594

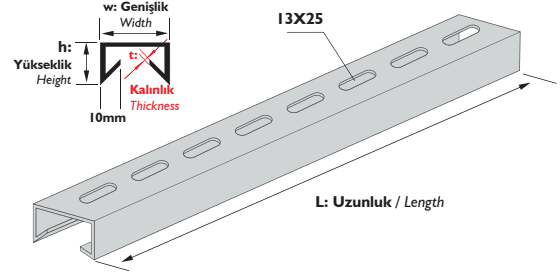
► AÇIKLAMALAR / INSTRUCTIONS :
NOT: Ölçü toleransı ± 3 mm.'dir.

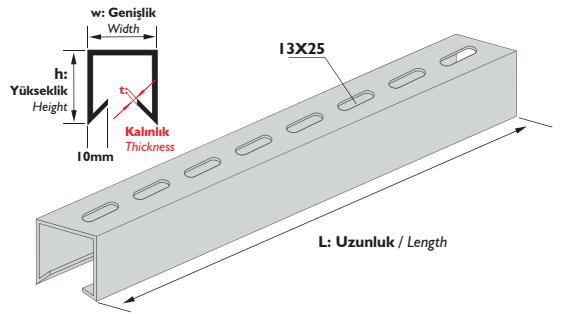
! Belirtilen ağırlıklar kesim ağırlıklardır.

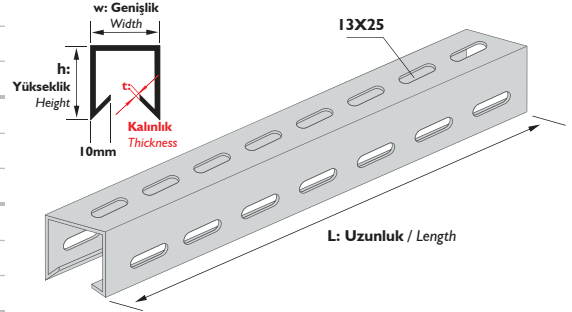
NOTE: The dimension tolerance in ± 3 mm

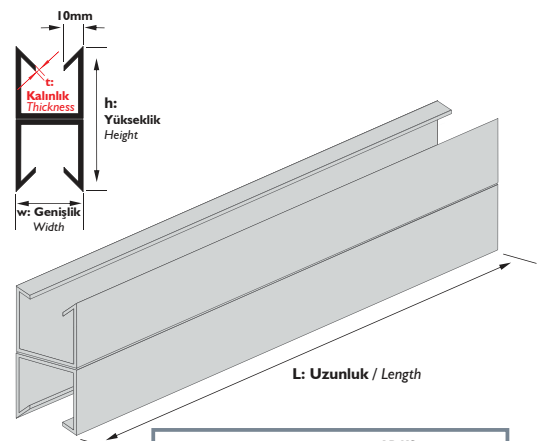
! The indicated weights are the weights before fabrication.

 ! C Profiller M10 Cıvata ve Somun Kullanımına Uygun Olan 11X20 Delik Ölçüsünde de Üretilir
 • The C Profiles have alternative hole dimension of 11X20 suitable for M10 Bolt and Nut usage as well.

C PROFİL
C PROFILE (Strut Channel)

 13X25 Delik Ölçülü Profiller M12 Cıvata, Somun ve Çelik Dübel Kullanımına Uygundur.
 C Profiles with 13x25mm hole dimension, is suitable for the usage of M12 Bolt, Nut and Anchor Bolt.

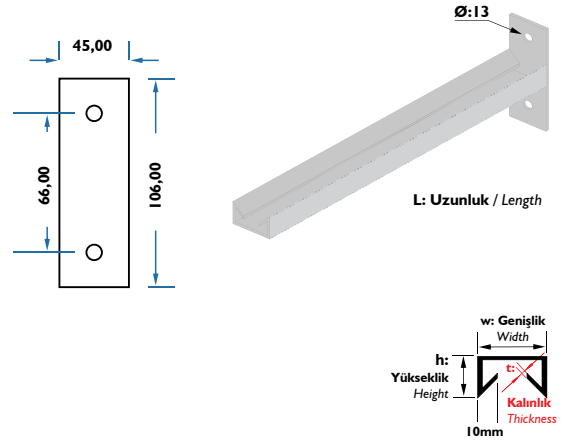
C PROFİL
C PROFILE (Strut Channel)

 13X25 Delik Ölçülü Profiller M12 Cıvata, Somun ve Çelik Dübel Kullanımına Uygundur.
 C Profiles with 13x25mm hole dimension, is suitable for the usage of M12 Bolt, Nut and Anchor Bolt.

DELİKLİ C PROFİL
C PROFILE PERFORATED (Strut Channel)

 13X25 Delik Ölçülü Profiller M12 Cıvata, Somun ve Çelik Dübel Kullanımına Uygundur.
 C Profiles with 13x25mm hole dimension, is suitable for the usage of M12 Bolt, Nut and Anchor Bolt.

C PROFİL (Çiftli)
DOUBLE C PROFILE (DoubleStrut Channel)

 Tüm C Profiller, Yaylı ya da Kare somun kullanımına uygundur.
 All C Profiles implementation are convenient for Spring or Square Nut usage.

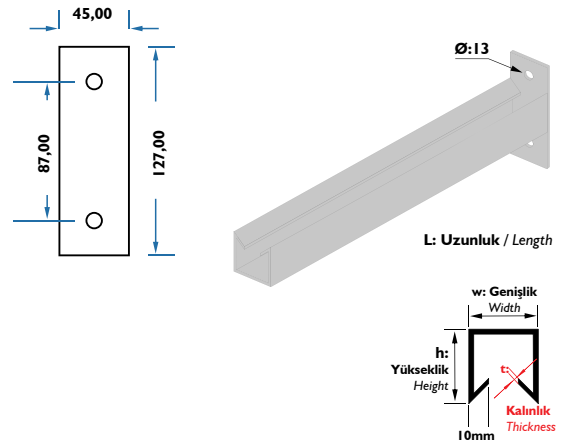
Sipariş Kodu (Order Code)	L (mm)	h (mm)	w (mm)	t (mm)	Kg/Adet (Kg/Pcs.)
AP-KC21-100	100	21	42	2,00	0,307
AP-KC21-150	150	21	42	2,00	0,385
AP-KC21-200	200	21	42	2,00	0,464
AP-KC21-250	250	21	42	2,00	0,542
AP-KC21-300	300	21	42	2,00	0,621
AP-KC21-400	400	21	42	2,00	0,778
AP-KC21-500	500	21	42	2,00	0,935
AP-KC21-600	600	21	42	2,00	1,092
AP-KC21-1000	1000	21	42	2,00	1,720
AP-KC21-1200	1200	21	42	2,00	2,034

C PROFİL
CANTILEVER ARM NON-PERFORATED



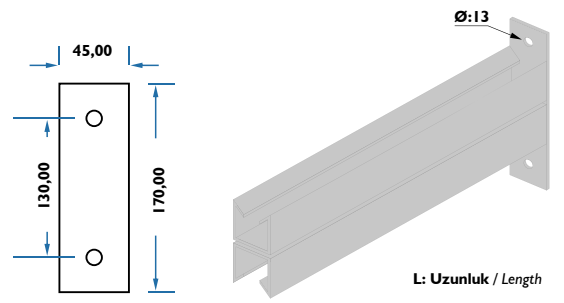
Sipariş Kodu (Order Code)	L (mm)	h (mm)	w (mm)	t (mm)	Kg/Adet (Kg/Pcs.)
AP-KC42-100	100	42	42	2,00	0,399
AP-KC42-150	150	42	42	2,00	0,509
AP-KC42-200	200	42	42	2,00	0,619
AP-KC42-250	250	42	42	2,00	0,729
AP-KC42-300	300	42	42	2,00	0,839
AP-KC42-400	400	42	42	2,00	1,059
AP-KC42-500	500	42	42	2,00	1,278
AP-KC42-600	600	42	42	2,00	1,498
AP-KC42-1000	1000	42	42	2,00	2,377
AP-KC42-1200	1200	42	42	2,00	2,817

C PROFİL
CANTILEVER ARM NON-PERFORATED



Sipariş Kodu (Order Code)	L (mm)	h (mm)	w (mm)	t (mm)	Kg/Adet (Kg/Pcs.)
AP-KC84-100	100	84	42	2,00	0,680
AP-KC84-150	150	84	42	2,00	0,900
AP-KC84-200	200	84	42	2,00	1,119
AP-KC84-250	250	84	42	2,00	1,178
AP-KC84-300	300	84	42	2,00	1,339
AP-KC84-400	400	84	42	2,00	1,559
AP-KC84-500	500	84	42	2,00	1,999
AP-KC84-600	600	84	42	2,00	2,438
AP-KC84-1000	1000	84	42	2,00	4,636
AP-KC84-1200	1200	84	42	2,00	5,515

C PROFİL
CANTILEVER ARM NON-PERFORATED



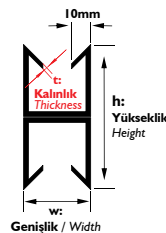
AÇIKLAMALAR / INSTRUCTIONS :

NOT: Ölçü toleransı ± 3 mm.'dir.

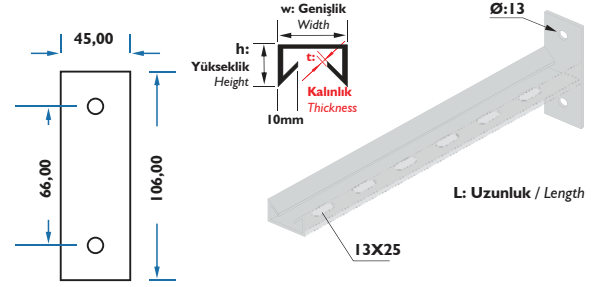
! Belirtilen ağırlıklar kesim ağırlığıdır.

NOTE: The dimension tolerance in ± 3 mm

! The indicated weights are the weights before fabrication.

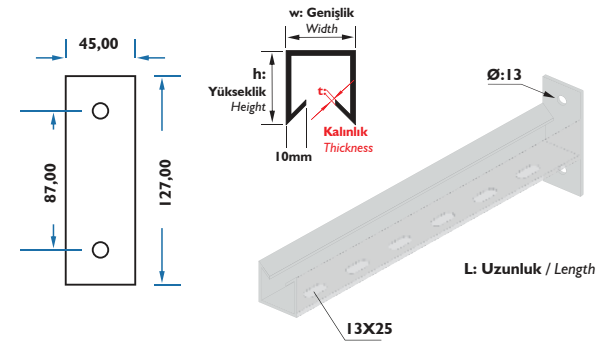


Sipariş Kodu (Order Code)	L (mm)	h (mm)	w (mm)	t (mm)	Kg/Adet (Kg/Pcs.)
AP-KCD21-100	100	21	42	2,00	0,307
AP-KCD21-150	150	21	42	2,00	0,385
AP-KCD21-200	200	21	42	2,00	0,464
AP-KCD21-250	250	21	42	2,00	0,542
AP-KCD21-300	300	21	42	2,00	0,621
AP-KCD21-400	400	21	42	2,00	0,778
AP-KCD21-500	500	21	42	2,00	0,935
AP-KCD21-600	600	21	42	2,00	1,092
AP-KCD21-1000	1000	21	42	2,00	1,720
AP-KCD21-1200	1200	21	42	2,00	2,034

C PROFİL
CANTILEVER ARM PERFORATED


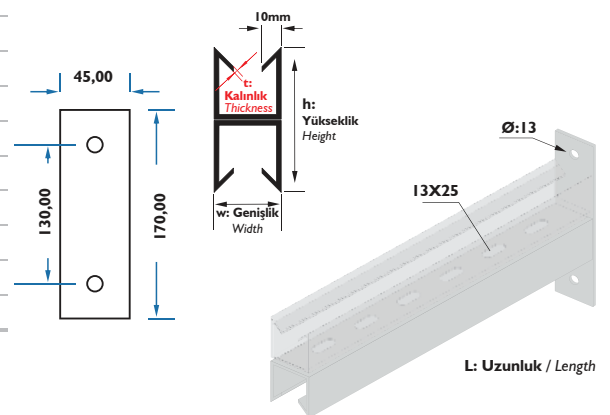
13X25 Delik Ölçülü Profiller M12 Cıvata, Somun ve Çelik Dübel Kullanımına Uygundur.
 C Profiles with 13x25mm hole dimension, is suitable for the usage of M12 Bolt, Nut and Anchor Bolt.

Sipariş Kodu (Order Code)	L (mm)	h (mm)	w (mm)	t (mm)	Kg/Adet (Kg/Pcs.)
AP-KCD42-100	100	42	42	2,00	0,399
AP-KCD42-150	150	42	42	2,00	0,509
AP-KCD42-200	200	42	42	2,00	0,619
AP-KCD42-250	250	42	42	2,00	0,729
AP-KCD42-300	300	42	42	2,00	0,839
AP-KCD42-400	400	42	42	2,00	1,059
AP-KCD42-500	500	42	42	2,00	1,278
AP-KCD42-600	600	42	42	2,00	1,498
AP-KCD42-1000	1000	42	42	2,00	2,377
AP-KCD42-1200	1200	42	42	2,00	2,817

C PROFİL
CANTILEVER ARM PERFORATED


13X25 Delik Ölçülü Profiller M12 Cıvata, Somun ve Çelik Dübel Kullanımına Uygundur.
 C Profiles with 13x25mm hole dimension, is suitable for the usage of M12 Bolt, Nut and Anchor Bolt.

Sipariş Kodu (Order Code)	L (mm)	h (mm)	w (mm)	t (mm)	Kg/Adet (Kg/Pcs.)
AP-KCD84-100	100	84	42	2,00	0,680
AP-KCD84-150	150	84	42	2,00	0,900
AP-KCD84-200	200	84	42	2,00	1,119
AP-KCD84-250	250	84	42	2,00	1,178
AP-KCD84-300	300	84	42	2,00	1,339
AP-KCD84-400	400	84	42	2,00	1,559
AP-KCD84-500	500	84	42	2,00	1,999
AP-KCD84-600	600	84	42	2,00	2,438
AP-KCD84-1000	1000	84	42	2,00	4,636
AP-KCD84-1200	1200	84	42	2,00	5,515

C PROFİL
CANTILEVER ARM PERFORATED


13X25 Delik Ölçülü Profiller M12 Cıvata, Somun ve Çelik Dübel Kullanımına Uygundur.
 C Profiles with 13x25mm hole dimension, is suitable for the usage of M12 Bolt, Nut and Anchor Bolt.

AÇIKLAMALAR / INSTRUCTIONS :

NOT: Ölçü toleransı ± 3 mm.'dir.

! Belirtilen ağırlıklar kesim ağırlıktadır.

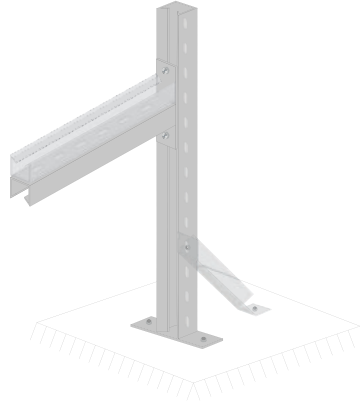
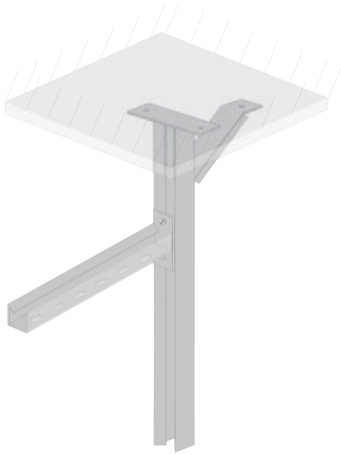
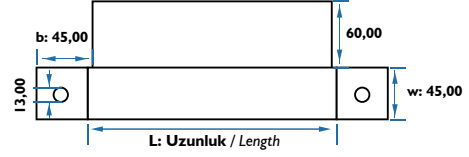
NOTE: The dimension tolerance in ± 3 mm

! The indicated weights are the weights before fabrication.

! C Profiller M10 Cıvata ve Somun Kullanımına Uygun Olan 11X20 Delik Ölçüsünde de Üretilebilir
 The C Profiles have alternative hole dimension of 11X20 suitable for M10 Bolt and Nut usage as well.

Sipariş Kodu (Order Code)	L (mm)	h (mm)	w (mm)	t (mm)	Kg/Adet (Kg/Pcs.)
AP-KCD1	125	45	45	4,00	0,539
AP-KCD2	425	45	45	4,00	1,528
AP-KCD3	725	45	45	4,00	2,517

C PROFİL SABİTLEME ELEMANI
C PROFILES FIXING UNIT



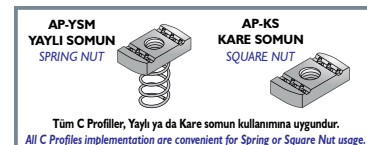
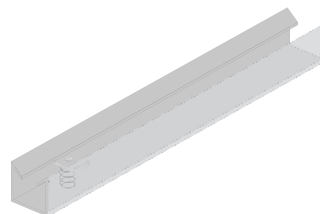
➤ AÇIKLAMALAR / INSTRUCTIONS :

NOT: Ölçü toleransı ± 3 mm.'dir.

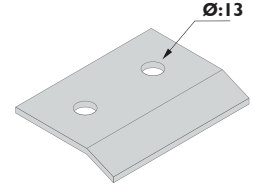
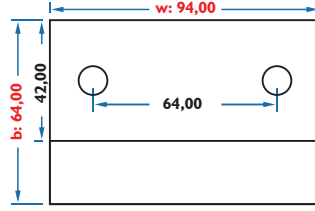
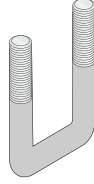
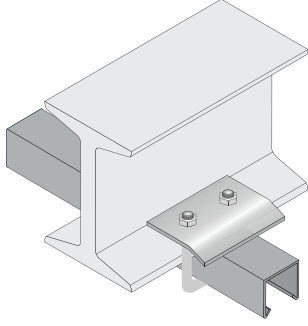
! Belirtilen ağırlıklar kesim ağırlıktadır.

NOTE: The dimension tolerance in ± 3 mm

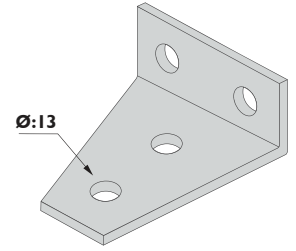
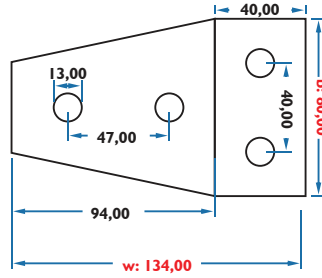
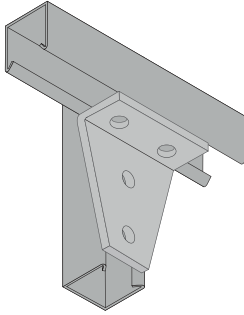
! The indicated weights are the weights before fabrication.



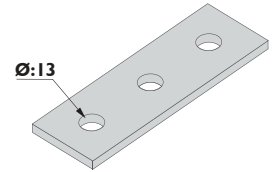
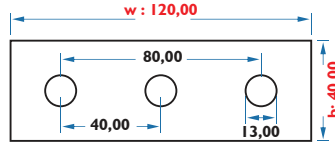
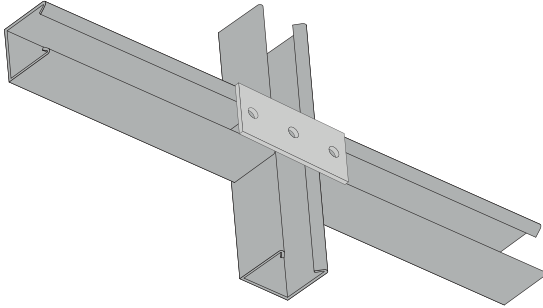
Sipariş Kodu (Order Code)	w (mm)	b (mm)	t (mm)	Kg/Adet (Kg/Pcs.)
AP-ECPI	94	64	5,00	0,236

C PROFİL PROFİLİ, I VE U DEMİRE BAĞLANTI ELEMANI
 C PROFILE FIXING UNIT WITH U BOLT


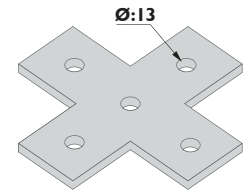
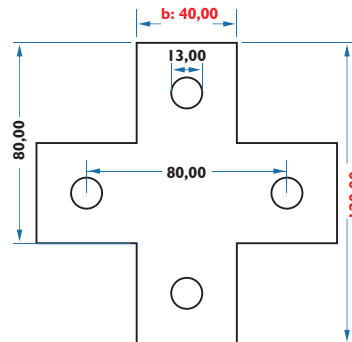
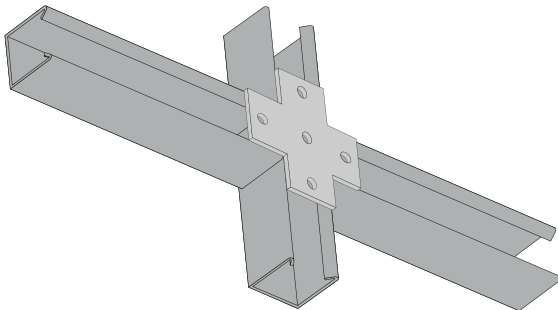
Sipariş Kodu (Order Code)	w (mm)	b (mm)	t (mm)	Kg/Adet (Kg/Pcs.)
AP-ECP2	134	80	5,00	0,563

C PROFİL BAĞLANTI ELEMANLARI
 90° ANGLE FITTING 136X84mm


Sipariş Kodu (Order Code)	w (mm)	b (mm)	t (mm)	Kg/Adet (Kg/Pcs.)
AP-ECP3	120	40	5,00	0,189

C PROFİL BAĞLANTI ELEMANLARI
 FLAT FITTING 126X42mm


Sipariş Kodu (Order Code)	w (mm)	b (mm)	t (mm)	Kg/Adet (Kg/Pcs.)
AP-ECP4	120	40	5,00	0,314

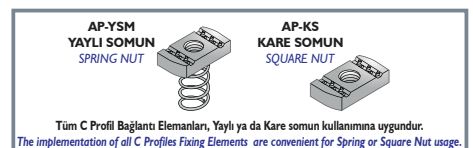
C PROFİL BAĞLANTI ELEMANLARI
 FLAT FITTING 126X42mm

AÇIKLAMALAR / INSTRUCTIONS :

NOT: Ölçü toleransı ± 3 mm.'dir.

! Belirtilen ağırlıklar kesim ağırlığıdır.

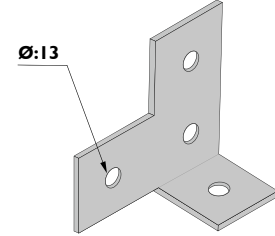
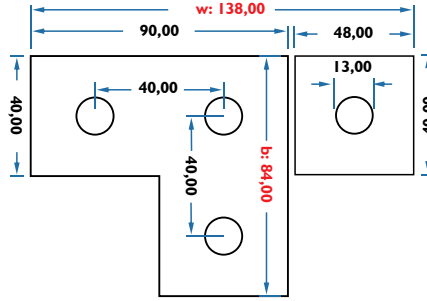
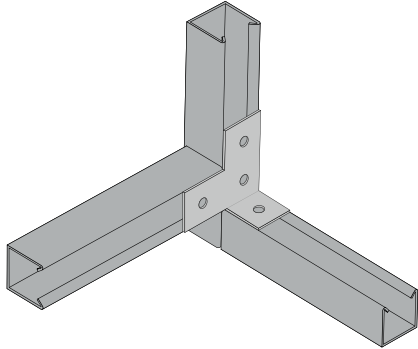
NOTE: The dimension tolerance in ± 3 mm

! The indicated weights are the weights before fabrication.



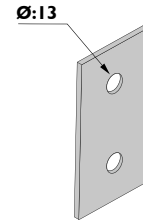
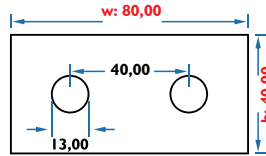
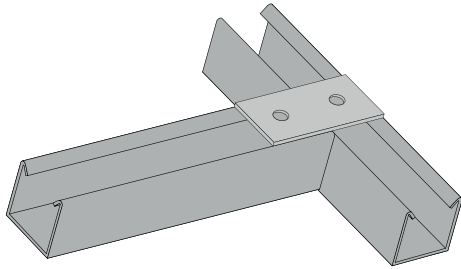
Sipariş Kodu (Order Code)	w (mm)	b (mm)	t (mm)	Kg/Adet (Kg/Pcs.)
AP-ECP5	138	40	5,00	0,250

C PROFİL BAĞLANTI ELEMANLARI
ANGLE FITTING 138X42mm



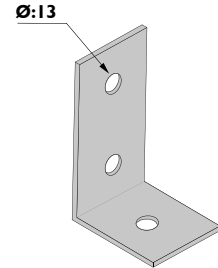
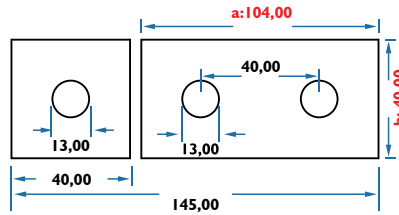
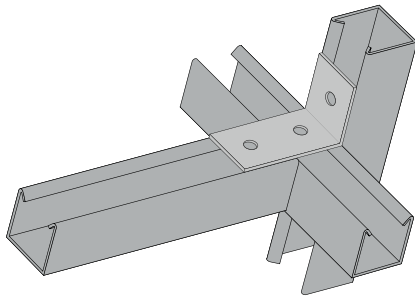
Sipariş Kodu (Order Code)	w (mm)	b (mm)	t (mm)	Kg/Adet (Kg/Pcs.)
AP-ECP6	80	40	5,00	0,126

C PROFİL BAĞLANTI ELEMANLARI
84mm FLAT FITTING



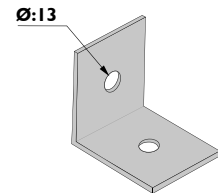
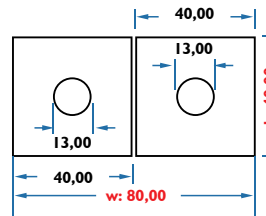
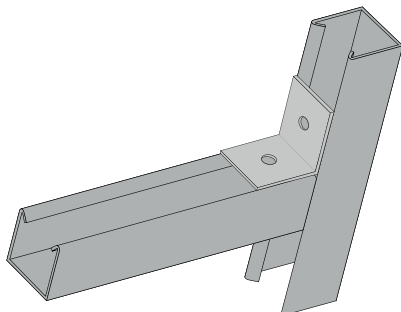
Sipariş Kodu (Order Code)	w (mm)	b (mm)	t (mm)	Kg/Adet (Kg/Pcs.)
AP-ECP7	104	40	5,00	0,228

C PROFİL BAĞLANTI ELEMANLARI
90° ANGLE FITTING 104X42mm



Sipariş Kodu (Order Code)	w (mm)	b (mm)	t (mm)	Kg/Adet (Kg/Pcs.)
AP-ECP8	80	40	5,00	0,126

C PROFİL BAĞLANTI ELEMANLARI
90° ANGLE FITTING 47X50mm



AÇIKLAMALAR / INSTRUCTIONS :

NOT: Ölçü toleransı ± 3 mm.'dir.

! Belirtilen ağırlıklar kesim ağırlıklarıdır.

NOTE: The dimension tolerance in ± 3 mm

! The indicated weights are the weights before fabrication.

AP-YSM
YAYLI SOMUN
SPRING NUT

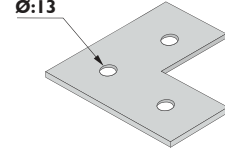
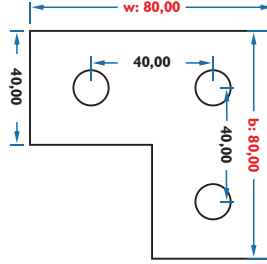
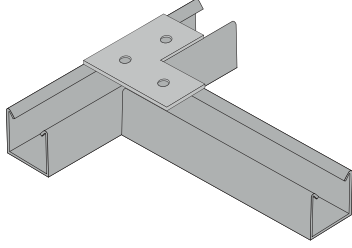


AP-KS
KARE SOMUN
SQUARE NUT

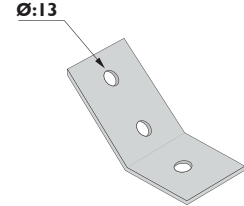
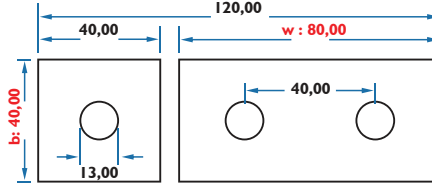
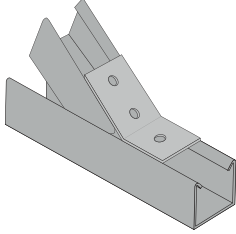


Tüm C Profil Bağlantı Elemanları, Yaylı ya da Kare somun kullanımına uygundur.
The implementation of all C Profiles Fixing Elements are convenient for Spring or Square Nut usage.

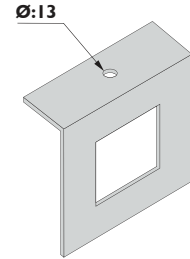
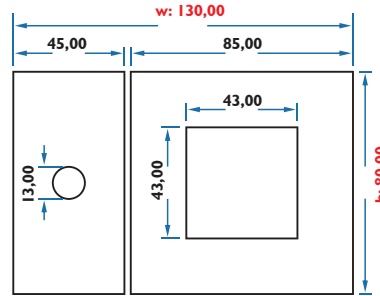
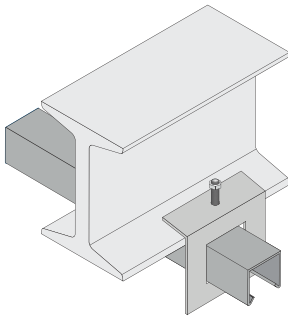
Sipariş Kodu (Order Code)	w (mm)	b (mm)	t (mm)	Kg/Adet (Kg/Pcs.)
AP-ECP9	80	80	5,00	0,188

C PROFİL BAĞLANTI ELEMANLARI
 FLAT FITTING 84X84mm


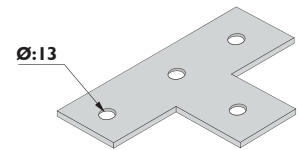
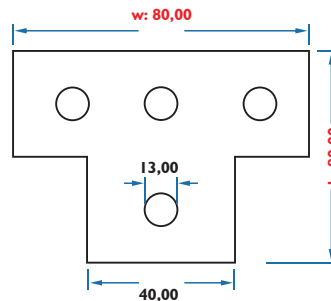
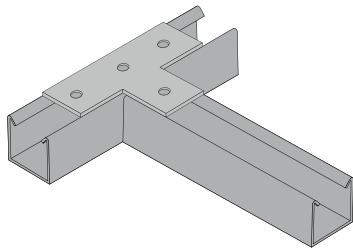
Sipariş Kodu (Order Code)	w (mm)	b (mm)	t (mm)	Kg/Adet (Kg/Pcs.)
AP-ECP10	90	40	5,00	0,188

C PROFİL BAĞLANTI ELEMANLARI
 135° ANGLE FITTING 90X42mm


Sipariş Kodu (Order Code)	w (mm)	b (mm)	t (mm)	Kg/Adet (Kg/Pcs.)
AP-ECP11	135	80	5,00	0,295

C PROFİL BAĞLANTI ELEMANLARI
 BEAM CLAMP WITH M10 FIXING HOLE Suitable for 41x41 mm Channel


Sipariş Kodu (Order Code)	w (mm)	b (mm)	t (mm)	Kg/Adet (Kg/Pcs.)
AP-ECP12	80	80	5,00	0,376

C PROFİL BAĞLANTI ELEMANLARI
 80X40mm T FLAT FITTING

AÇIKLAMALAR / INSTRUCTIONS :

NOT: Ölçü toleransı ± 3 mm.'dir.

! Belirtilen ağırlıklar kesim ağırlıktır.

NOTE: The dimension tolerance in ± 3 mm

! The indicated weights are the weights before fabrication.

AP-YSM
YAYLI SOMUN
SPRING NUT



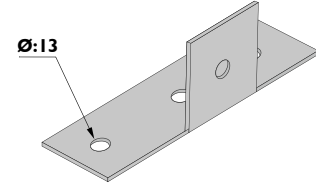
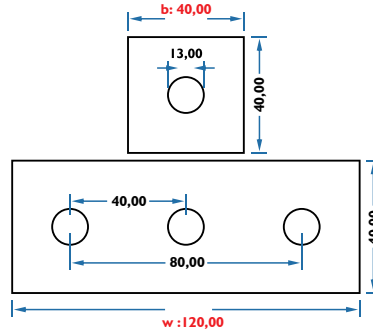
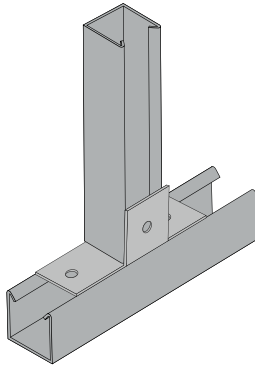
AP-KS
KARE SOMUN
SQUARE NUT



Tüm C Profil Bağlantı Elemanları, Yaylı ya da Kare somun kullanımına uygundur.
The implementation of all C Profiles Fixing Elements are convenient for Spring or Square Nut usage.

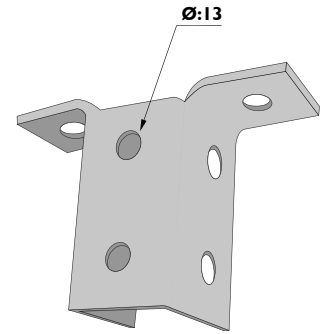
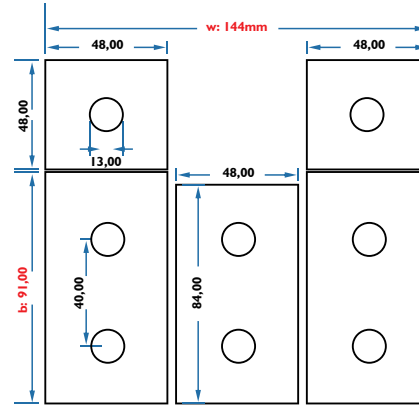
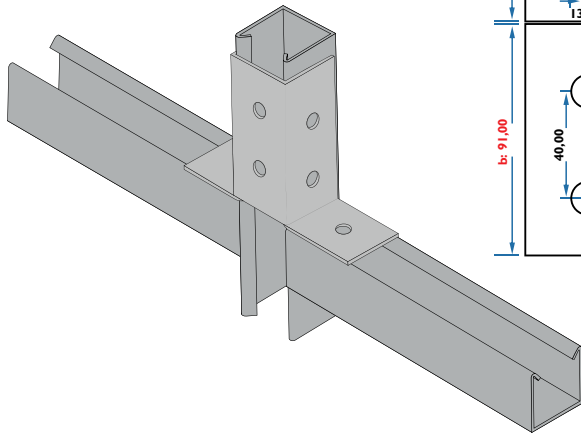
Sipariş Kodu (Order Code)	w (mm)	b (mm)	t (mm)	Kg/Adet (Kg/Pcs.)
AP-ECPI3	120	40	5,00	0,191

C PROFİL BAĞLANTI ELEMANLARI
ANGLE FITTING 126X42mm



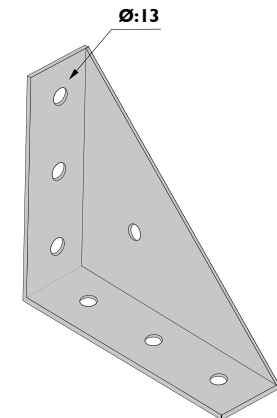
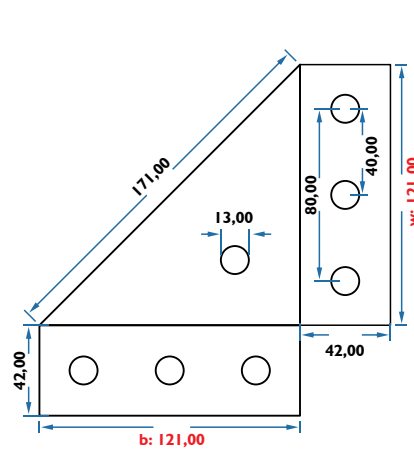
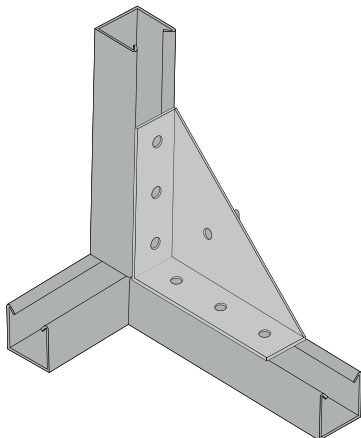
Sipariş Kodu (Order Code)	w (mm)	b (mm)	t (mm)	Kg/Adet (Kg/Pcs.)
AP-ECPI4	144	91	5,00	0,701

C PROFİL BAĞLANTI ELEMANLARI
C PROFILE FIXING ACCESSORIES



Sipariş Kodu (Order Code)	w (mm)	b (mm)	t (mm)	Kg/Adet (Kg/Pcs.)
AP-ECPI5	121	121	5,00	0,686

C PROFİL BAĞLANTI ELEMANLARI
C PROFILE FIXING ACCESSORIES



➤ AÇIKLAMALAR / INSTRUCTIONS :

NOT: Ölçü toleransı ± 3 mm.'dir.

! Belirtilen ağırlıklar kesim ağırlığıdır.

NOTE: The dimension tolerance in ± 3 mm

! The indicated weights are the weights before fabrication.

AP-YSM
YAYLI SOMUN
SPRING NUT

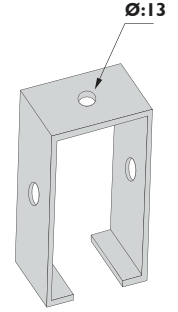
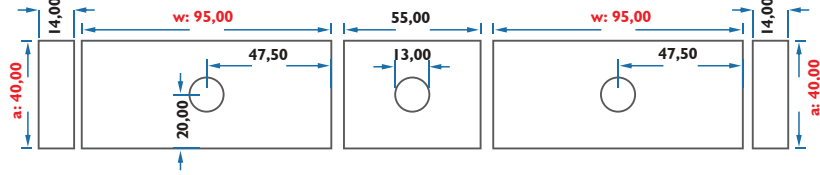
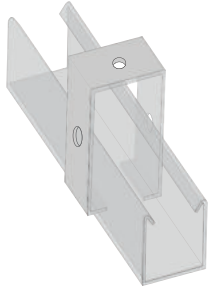


AP-KS
KARE SOMUN
SQUARE NUT

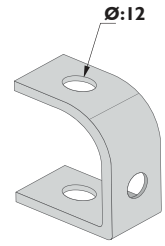
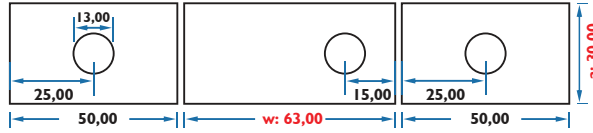
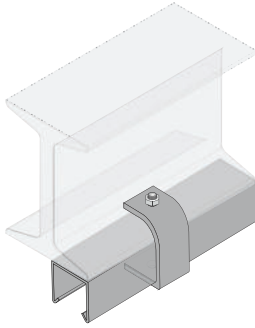


Tüm C Profil Bağlantı Elemanları, Yaylı ya da Kare somun kullanımına uygundur.
The implementation of all C Profiles Fixing Elements are convenient for Spring or Square Nut usage.

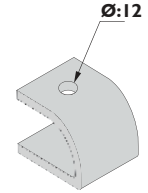
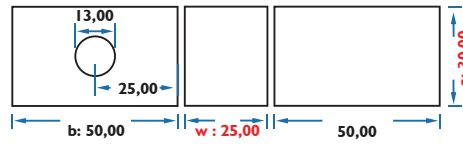
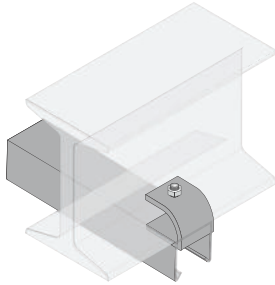
Sipariş Kodu (Order Code)	w (mm)	a (mm)	t (mm)	Kg/Adet (Kg/Pcs.)
AP-ECP16	95	40	5,00	0,443

C PROFİL BAĞLANTI ELEMANLARI
 LIGHTING SUPPORT


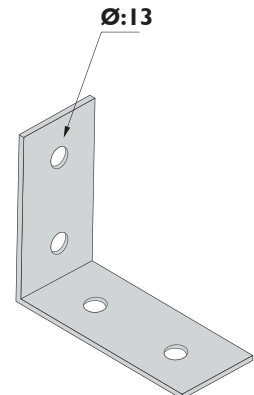
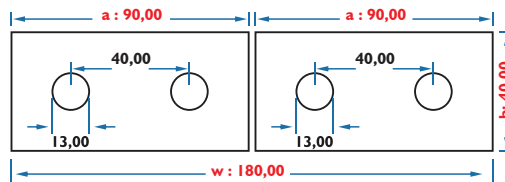
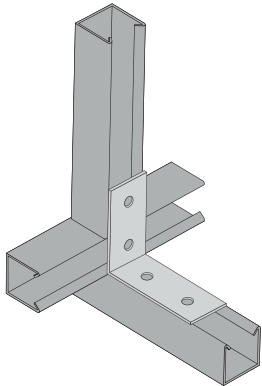
Sipariş Kodu (Order Code)	w (mm)	a (mm)	t (mm)	Kg/Adet (Kg/Pcs.)
AP-ECP17	63	30	5,00	0,192

C PROFİL BAĞLANTI ELEMANLARI
 63mm BEAM CLAMP


Sipariş Kodu (Order Code)	w (mm)	a (mm)	b (mm)	t (mm)	Kg/Adet (Kg/Pcs.)
AP-ECP18	25	30	50	5,00	0,147

C PROFİL BAĞLANTI ELEMANLARI
 25mm BEAM CLAMP


Sipariş Kodu (Order Code)	w (mm)	a (mm)	b (mm)	t (mm)	Kg/Adet (Kg/Pcs.)
AP-ECP19	180	40	90	5,00	0,283

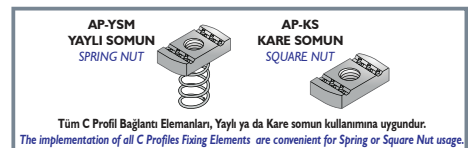
C PROFİL BAĞLANTI ELEMANLARI
 90° ANGLE FITTING 105X42

AÇIKLAMALAR / INSTRUCTIONS :

NOT: Ölçü toleransı ± 3 mm.'dir.

! Belirtilen ağırlıklar kesim ağırlıklarıdır.

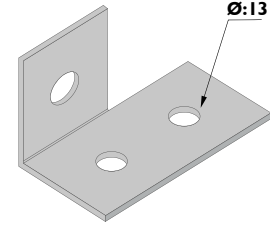
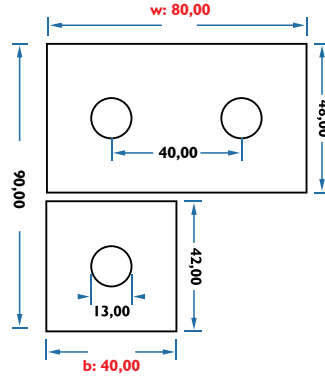
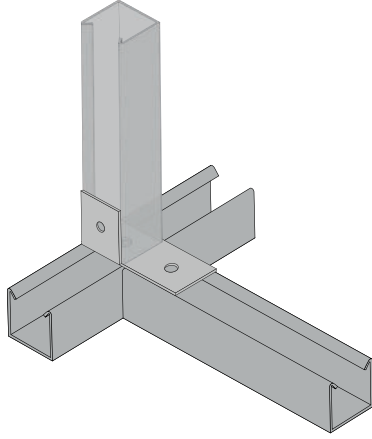
NOTE: The dimension tolerance in ± 3 mm

! The indicated weights are the weights before fabrication.



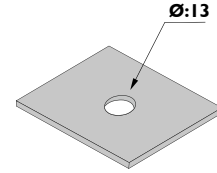
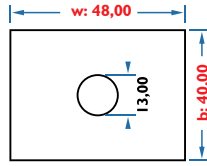
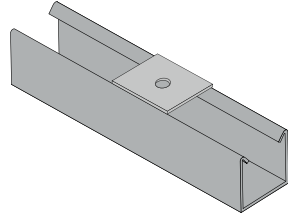
Sipariş Kodu (Order Code)	w (mm)	b (mm)	t (mm)	Kg/Adet (Kg/Pcs.)
AP-ECP20	80	40	5,00	0,227

C PROFİL BAĞLANTI ELEMANLARI
ANGULAR WING FITTING



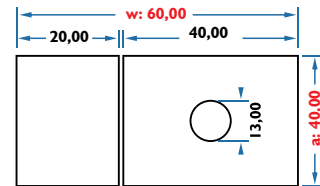
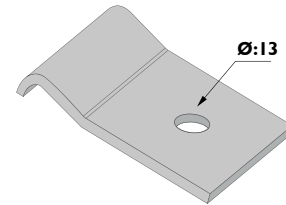
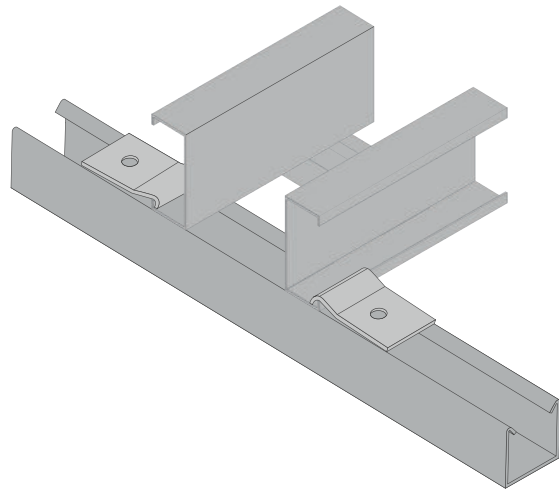
Sipariş Kodu (Order Code)	w (mm)	b (mm)	t (mm)	Kg/Adet (Kg/Pcs.)
AP-ECP21	48	40	5,00	0,079

C PROFİL BAĞLANTI ELEMANLARI
FLAT FITTING 48X42mm



Sipariş Kodu (Order Code)	w (mm)	a (mm)	t (mm)	Kg/Adet (Kg/Pcs.)
AP-ECP22	60	40	5,00	0,099

C PROFİL BAĞLANTI ELEMANLARI
EXTERNAL FLANGE CLAMP 60X42mm



AÇIKLAMALAR / INSTRUCTIONS :

NOT: Ölçü toleransı ± 3 mm.'dir.

! Belirtilen ağırlıklar kesim ağırlığıdır.

NOTE: The dimension tolerance in ± 3 mm

! The indicated weights are the weights before fabrication.

AP-YSM
YAYLI SOMUN
SPRING NUT

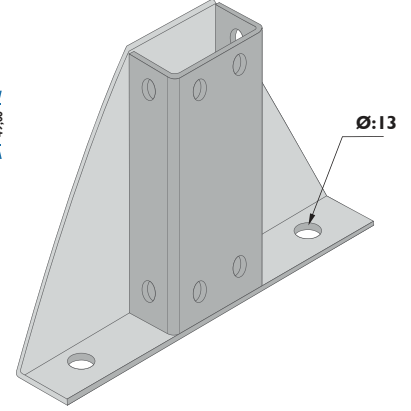
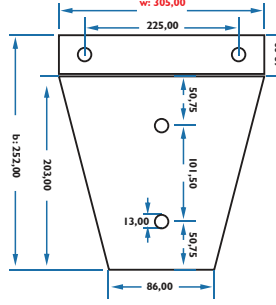
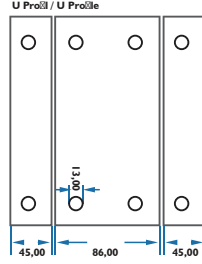
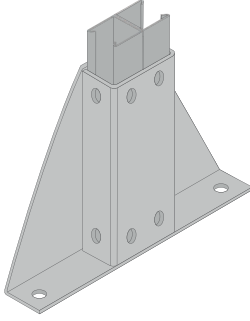


AP-KS
KARE SOMUN
SQUARE NUT

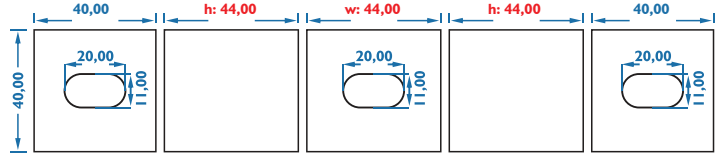
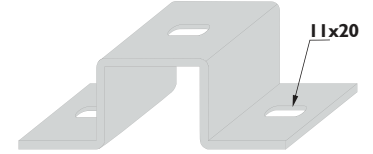
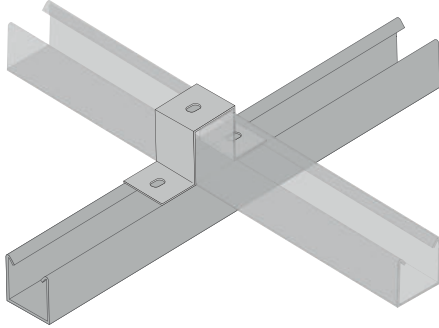


Tüm C Profili Bağlantı Elemanları, Yaylı ya da Kare somun kullanımına uygundur.
The implementation of all C Profiles Fixing Elements are convenient for Spring or Square Nut usage.

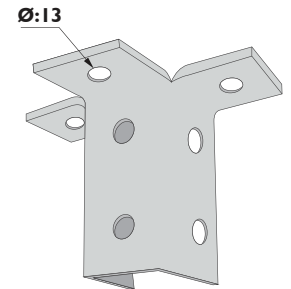
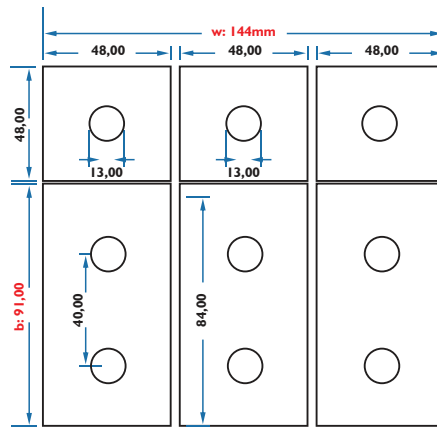
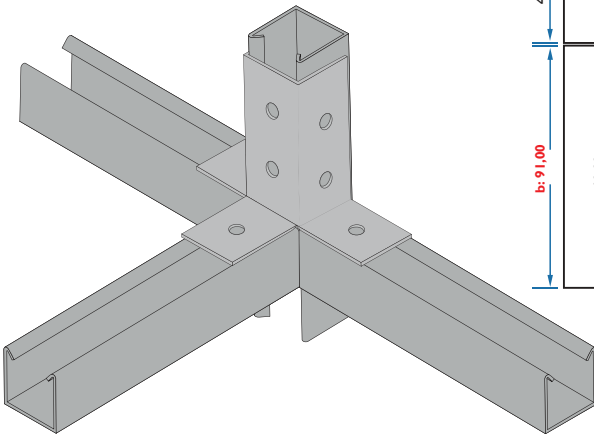
Sipariş Kodu (Order Code)	w (mm)	b (mm)	t (mm)	Kg/Adet (Kg/Pcs.)
AP-ECP23	305	252	3,00	0,443

C PROFİL BAĞLANTI ELEMANLARI
 CHANNEL BASE PLATE


Sipariş Kodu (Order Code)	w (mm)	h (mm)	t (mm)	Kg/Adet (Kg/Pcs.)
AP-ECP24	44	44	5,00	0,270

C PROFİL BAĞLANTI ELEMANLARI
 CHANNEL BASE PLATE


Sipariş Kodu (Order Code)	w (mm)	b (mm)	t (mm)	Kg/Adet (Kg/Pcs.)
AP-ECP25	144	91	5,00	0,773

C PROFİL BAĞLANTI ELEMANLARI
 C PROFILE FIXING ACCESSORIES

AÇIKLAMALAR / INSTRUCTIONS :

NOT: Ölçü toleransı ± 3 mm.'dir.

! Belirtilen ağırlıklar kesim ağırlıklarıdır.

NOTE: The dimension tolerance in ± 3 mm

! The indicated weights are the weights before fabrication.

AP-YSM
YAYLI SOMUN
SPRING NUT



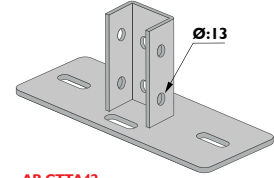
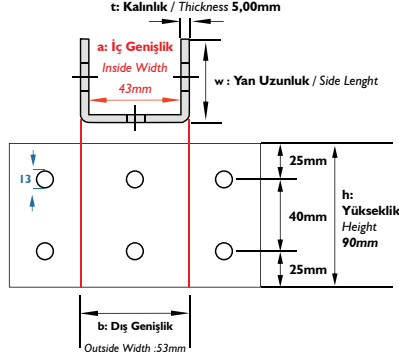
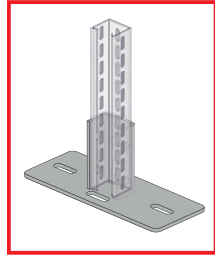
AP-KS
KARE SOMUN
SQUARE NUT



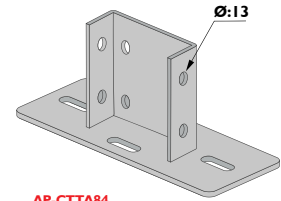
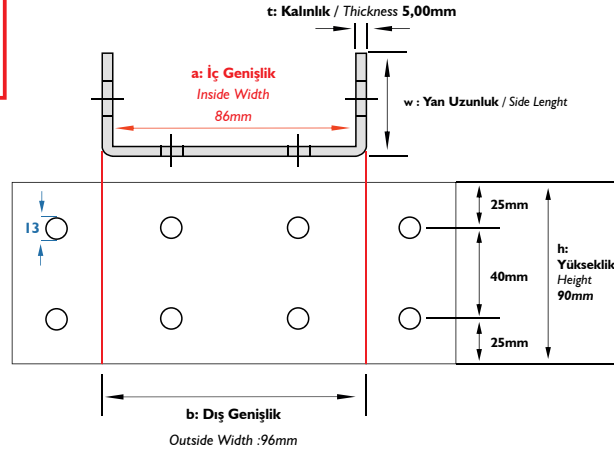
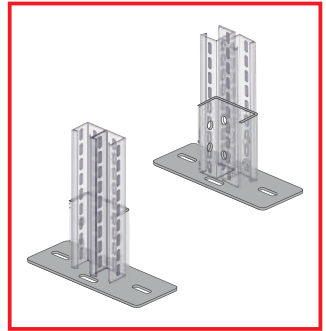
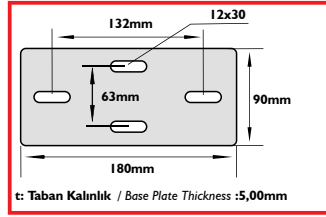
Tüm C Profil Bağlantı Elemanları, Yaylı ya da Kare somun kullanıma uygundur.
The implementation of all C Profiles Fixing Elements are convenient for Spring or Square Nut usage.

Sipariş Kodu (Order Code)	a (mm)	b (mm)	h (mm)	w (mm)	t (mm)	Kg/Adet (Kg/Pcs.)
AP-CTTA42	43	53	90	44	5,00	1,063
AP-CTTA84	86	96	90	44	5,00	1,215

C PROFİL TAVAN TESPİT
CHANNEL BASE PLATE WITH M12 FIXING HOLES FOR 42 x 82mm CHANNEL
CHANNEL BASE PLATE WITH M12 FIXING HOLES FOR 42 x 42mm CHANNEL



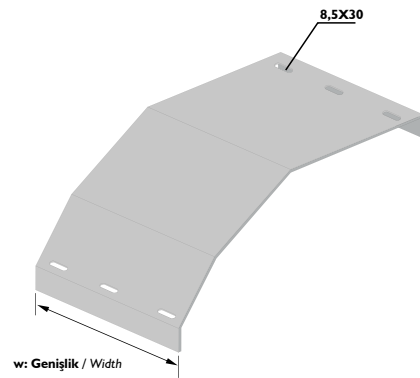
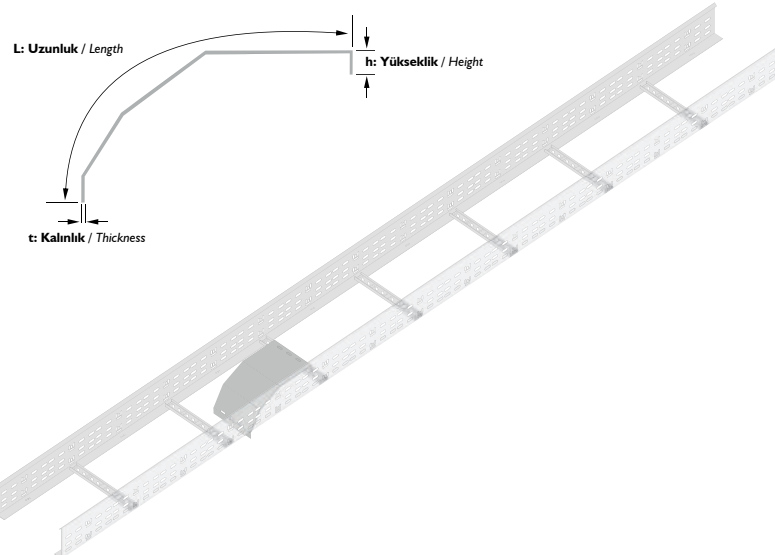
AP-CTTA42



AP-CTTA84

Sipariş Kodu (Order Code)	w (mm)	h (mm)	L (mm)	t (mm)	Kg/Adet (Kg/Pcs.)
AP-KC100	50	15	180	2,00	0,153
AP-KC150	100	15	180	2,00	0,306
AP-KC200	150	15	180	2,00	0,459
AP-KC250	200	15	180	2,00	0,612
AP-KC300	250	15	180	2,00	0,765
AP-KC400	350	15	180	2,00	1,072
AP-KC500	450	15	180	2,00	1,378
AP-KC600	550	15	180	2,00	1,684

KABLO ÇIKIŞ ELEMANLARI
CABLE DROP OUT UNIT



➤ **AÇIKLAMALAR / INSTRUCTIONS :**

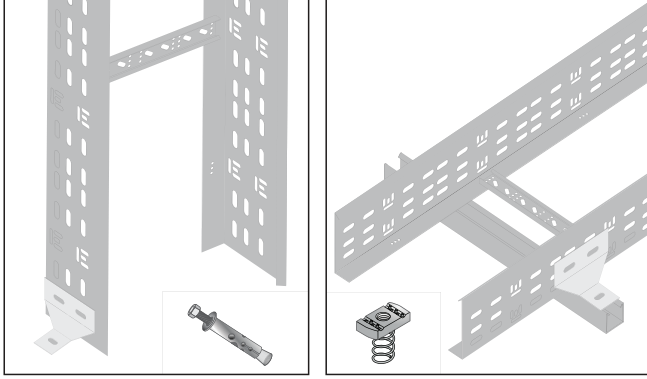
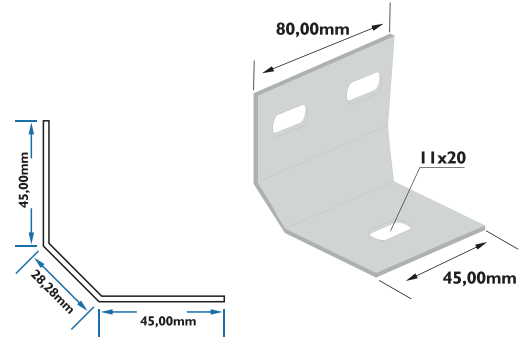
NOT: Ölçü toleransı ± 3 mm.'dir.

! Belirtilen ağırlıklar kesim ağırlığıdır.

NOTE: The dimension tolerance in ± 3 mm

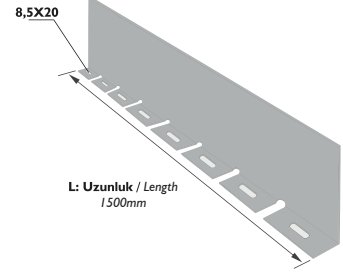
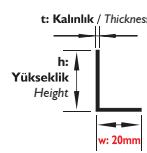
! The indicated weights are the weights before fabrication.

Sipariş Kodu (Order Code)	w (mm)	b (mm)	t (mm)	Kg/Adet (Kg/Pcs.)
AP-D	305	252	3,00	0,443


BAĞLANTI ELEMANLARI
 FIXING ACCESSORIES


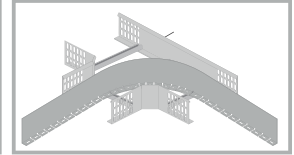
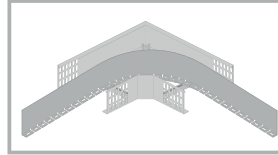
Sipariş Kodu (Order Code)	w (mm)	h (mm)	t (mm)	Kg/Adet (Kg/Pcs.)
AP-DSPK3.12	20	35	1,20	0,777
AP-DSPK4.12	20	45	1,20	0,918
AP-DSPK5.12	20	55	1,20	1,061
AP-DSPK6.15	20	95	1,50	2,031
AP-DSPK7.15	20	145	1,50	2,915

KANAL - CABLE TRAY

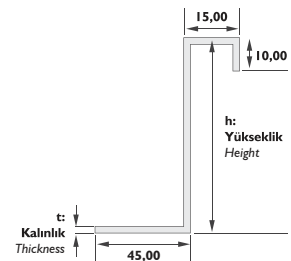
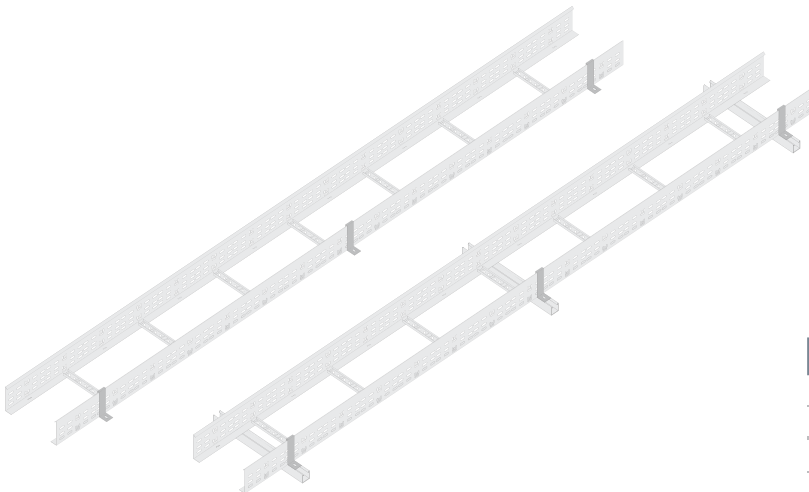
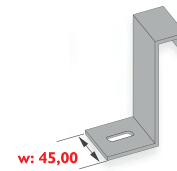
KABLO KANAL VE MERDİVEN DÖNÜŞ SEPERATÖRLERİ
 CABLE TRAY AND LADDER HORIZONTAL BEND SEPERATORS


Sipariş Kodu (Order Code)	w (mm)	h (mm)	t (mm)	Kg/Adet (Kg/Pcs.)
AP-DSPM3.12	20	25	1,20	0,636
AP-DSPM4.12	20	35	1,20	0,777
AP-DSPM5.12	20	45	1,20	0,918
AP-DSPM6.15	20	85	1,50	1,855
AP-DSPM6.15	20	105	1,50	2,208
AP-DSPM6.15	20	135	1,50	2,738

MERDİVEN-LADDER



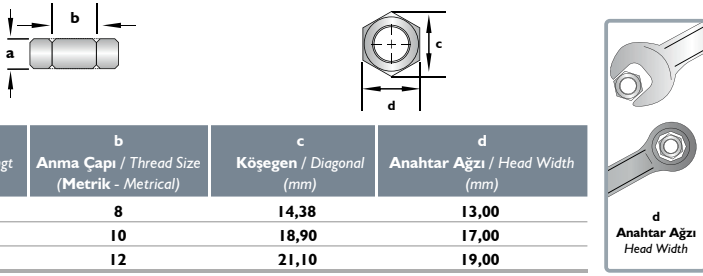
Sipariş Kodu (Order Code)	w (mm)	h (mm)	t (mm)	Kg/Adet (Kg/Pcs.)
AP-HDC40	45	40	2,00	0,078
AP-HDC50	45	50	2,00	0,085
AP-HDC60	45	60	2,00	0,092
AP-HDC100	45	100	2,00	0,120
AP-HDC125	45	125	2,00	0,138
AP-HDC150	45	150	2,00	0,155

MERDİVEN SABİTLEME ELEMANI
 HOLD DOWN CLAMP

AÇIKLAMALAR / INSTRUCTIONS :
NOT: Ölçü toleransı ± 3 mm.'dir.

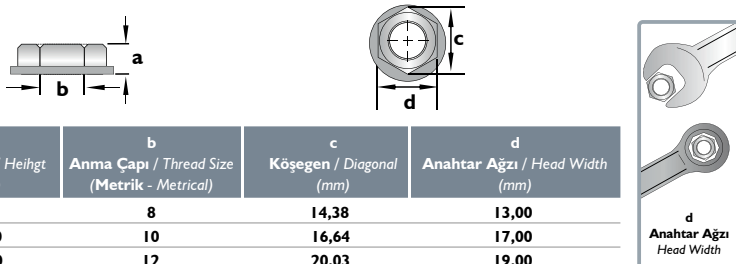
! Belirtilen ağırlıklar kesim ağırlıklarıdır.

NOTE: The dimension tolerance in ± 3 mm

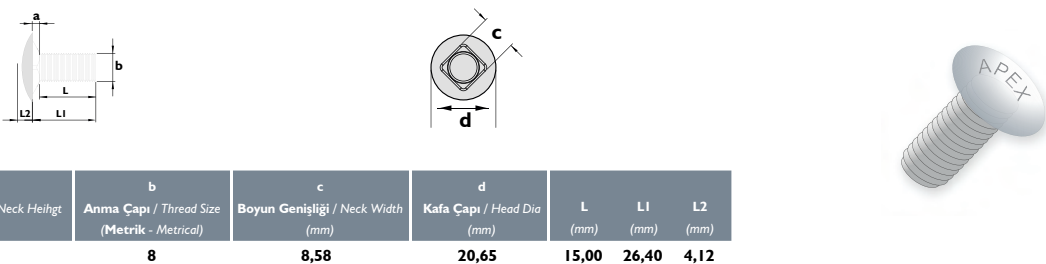
! The indicated weights are the weights before fabrication.

Sipariş Kodu (Order Code)	Açıklama (Description)	Kg /Adet (Kg/Pcs.)	SOMUN NUT
AP-SM8	M8 SOMUN - M8 NUT	0,005	
AP-SM10	M10 SOMUN - M10 NUT	0,010	
AP-SM12	M12 SOMUN - M12 NUT	0,015	

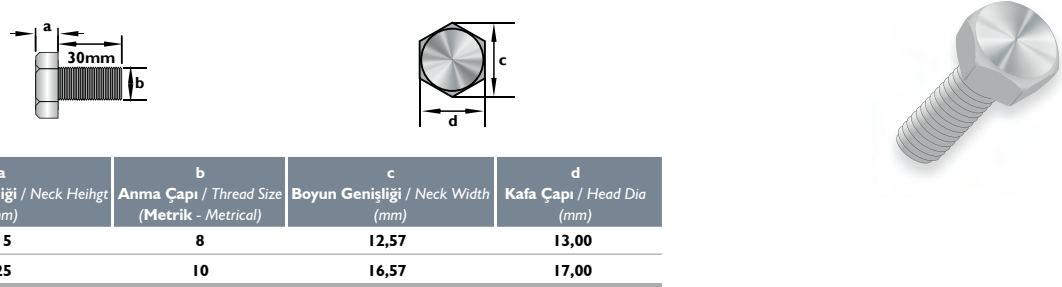
a	b	c	d
Yükseklik / Heiğt (mm)	Anma Çapı / Thread Size (Metrik - Metrical)	Köşegen / Diagonal (mm)	Anahtar Ağzı / Head Width (mm)
6,50	8	14,38	13,00
8,00	10	18,90	17,00
10,00	12	21,10	19,00

Sipariş Kodu (Order Code)	Açıklama (Description)	Kg /Adet (Kg/Pcs.)	FLANŞLI SOMUN FLANGED NUT
AP-SFM8	FLANŞLI M8 SOMUN - M8 FLANGED NUT	0,005	
AP-SFM10	FLANŞLI M10 SOMUN - M10 FLANGED NUT	0,010	
AP-SFM12	FLANŞLI M12 SOMUN - M12 FLANGED NUT	0,015	

a	b	c	d
Yükseklik / Heiğt (mm)	Anma Çapı / Thread Size (Metrik - Metrical)	Köşegen / Diagonal (mm)	Anahtar Ağzı / Head Width (mm)
8,00	8	14,38	13,00
10,00	10	16,64	17,00
12,00	12	20,03	19,00

Sipariş Kodu (Order Code)	Açıklama (Description)	Kg /Adet (Kg/Pcs.)	BOMBE BAŞLI CIVATA MUSHROOM HEAD BOLT
AP-CM8X15 BB	M8X15 B. B. CIVATA- M8X15 ROUND HEAD BOLT	0,007	

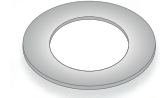
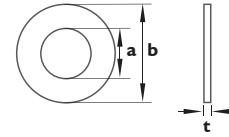
a	b	c	d	L	L1	L2
Boyun Yüksekliği / Neck Heiğt (mm)	Anma Çapı / Thread Size (Metrik - Metrical)	Boyun Genişliği / Neck Width (mm)	Kafa Çapı / Head Dia (mm)	(mm)	(mm)	(mm)
4,40	8	8,58	20,65	15,00	26,40	4,12

Sipariş Kodu (Order Code)	Açıklama (Description)	Kg /Adet (Kg/Pcs.)	ALTI KÖŞE BAŞLI CIVATA HEXAGON HEAD BOLT
AP-CM8X30 AB	M8X30 A. B. CIVATA - M8X30 HEXAGON BOLT	0,015	
AP-CM10X30 AB	M10X30 A. B. CIVATA - M10X30 HEXAGON BOLT	0,025	

a	b	c	d
Boyun Yüksekliği / Neck Heiğt (mm)	Anma Çapı / Thread Size (Metrik - Metrical)	Boyun Genişliği / Neck Width (mm)	Kafa Çapı / Head Dia (mm)
5,15	8	12,57	13,00
6,25	10	16,57	17,00

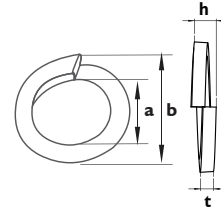
Sipariş Kodu (Order Code)	Açıklama (Description)	Kg /Adet (Kg/Pcs.)
AP-PM8	M8 DÜZ PUL - M8 PLAIN WASHER	0,002
AP-PM10	M10 DÜZ PUL - M10 PLAIN WASHER	0,006
AP-PM12	M12 DÜZ PUL - M12 PLAIN WASHER	0,008

a Anma Çapı / Thread Size (mm)	b Anma Çapı / Thread Size (Metrik - Metrical)	t Kalınlık / Thickness (mm)
8,40	8	1,80
10,50	10	2,20
13,00	12	2,70


DÜZ PUL
 PLAIN WASHER

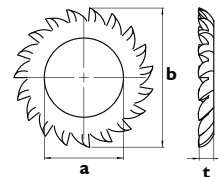
Sipariş Kodu (Order Code)	Açıklama (Description)	Kg /Adet (Kg/Pcs.)
AP-YPM8	M8 YAYLI PUL - M8 SPRING WASHER	0,002
AP-YPM10	M10 YAYLI PUL - M10 SPRING WASHER	0,006
AP-YPM12	M12 YAYLI PUL - M12 SPRING WASHER	0,008

a Yükseklik / Height (mm)	b Anma Çapı / Thread Size (Metrik - Metrical)	t Kalınlık / Thickness (mm)	h Yükseklik / Height (mm)
8,50	14,80	2,10	4,00
10,70	18,10	2,35	4,40
12,70	21,10	2,65	5,00


YAYLI PUL
 SPRING WASHER

Sipariş Kodu (Order Code)	Açıklama (Description)	Kg /Adet (Kg/Pcs.)
AP-TPM8	M8 TIRTILLI PUL - M8 LOCK WASHER	0,002
AP-TPM10	M10 TIRTILLI PUL - M10 LOCK WASHER	0,006
AP-TPM12	M12 TIRTILLI PUL - M12 LOCK WASHER	0,008

a Anma Çapı / Thread Size (mm)	b Anma Çapı / Thread Size (Metrik - Metrical)	t Kalınlık / Thickness (mm)
8,40	14,57	1,50
10,50	17,57	1,60
13,00	19,95	1,60


TIRTILLI PUL
 LOCK WASHER

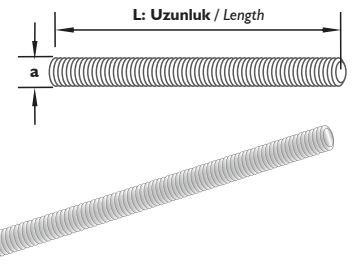
Sipariş Kodu (Order Code)	Açıklama (Description)	Kg/Adet (Kg/Pcs.)	SAC GÖMLEKLİ DÜBEL SLEEVE ANCHOR						
AP-ÇD1	M6 SAC GÖMLEKLİ DÜBEL - M6 SLEEVE ANCHOR	0,015							
AP-ÇD2	M8 SAC GÖMLEKLİ DÜBEL - M8 SLEEVE ANCHOR	0,030							
AP-ÇD3	M10 SAC GÖMLEKLİ DÜBEL - M10 SLEEVE ANCHOR	0,066							
AP-ÇD4	M12 SAC GÖMLEKLİ DÜBEL - M12 SLEEVE ANCHOR	0,110							
			a (mm)	L (mm)	LI (mm)	b (M)	e (mm)	Sıkma Torku Tightening Torque	Emniyetli Çekme Yüğü Safe Tensile Load
			8,00	35	35	6,00	1,00	24,00 N/m	1,50 kN
			10,00	40	35	8,00	1,00	28,00 N/m	2,00 kN
			12,00	70	65	10,00	1,00	65,00 N/m	3,10 kN
			16,00	70	65	12,00	1,20	115,00 N/m	5,00 kN

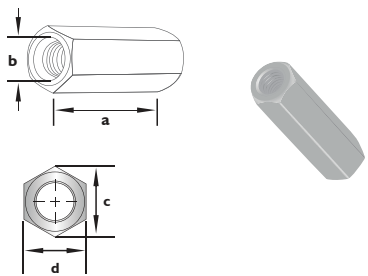
Sipariş Kodu (Order Code)	Açıklama (Description)	Kg/Adet (Kg/Pcs.)	S TİPİ (KIRMIZI TAPALI) DÜBEL DROP IN ANCHOR (S TYPE)				
AP-ÇÇD1	M6 S TİPİ DÜBEL - M6 S TYPE ANCHOR	0,012					
AP-ÇÇD2	M8 S TİPİ DÜBEL - M8 S TYPE ANCHOR	0,016					
AP-ÇÇD3	M10 S TİPİ DÜBEL - M10 S TYPE ANCHOR	0,027					
AP-ÇÇD4	M12 S TİPİ DÜBEL - M12 S TYPE ANCHOR	0,045					
			a (mm)	L (mm)	b (M)	Sıkma Torku Tightening Torque	Emniyetli Çekme Yüğü Safe Tensile Load
			10,00	46	6	22,00 N/m	0,75 kN
			12,00	50	8	60,00 N/m	3,50 kN
			15,00	55	10	78,00 N/m	5,00 kN
			18,00	80	12	115,00 N/m	7,50 kN

Tij İçin (For Threaded Rod)


Sipariş Kodu (Order Code)	Açıklama (Description)	Kg/Adet (Kg/Pcs.)	BORU GÖMLEKLİ DÜBEL FIX BOLT ANCHOR						
AP-ÇÇB1	M6 S TİPİ DÜBEL - M6 S TYPE ANCHOR	0,023							
AP-ÇÇB2	M8 S TİPİ DÜBEL - M8 S TYPE ANCHOR	0,042							
AP-ÇÇB3	M10 S TİPİ DÜBEL - M10 S TYPE ANCHOR	0,077							
AP-ÇÇB4	M12 S TİPİ DÜBEL - M12 S TYPE ANCHOR	0,110							
			a (mm)	L (mm)	LI (mm)	b (M)	τ (mm)	Sıkma Torku Tightening Torque	Emniyetli Çekme Yüğü Safe Tensile Load
			10,00	50	45	6,00	1,00	24,00 N/m	5,00 kN
			13,00	62	45	8,00	1,20	45,00 N/m	9,00 kN
			15,00	70	55	10,00	1,20	65,00 N/m	9,00 kN
			16,00	90	75	12,00	1,20	90,00 N/m	11,00 kN

Sipariş Kodu (Order Code)	Açıklama (Description)	Kg/Adet (Kg/Pcs.)	ÇAKMA (KOVAN) TİPİ DÜBEL DROP IN ANCHOR					
AP-ÇK1	M6 S TİPİ DÜBEL - M6 S TYPE ANCHOR	0,009						
AP-ÇK2	M8 S TİPİ DÜBEL - M8 S TYPE ANCHOR	0,013						
AP-ÇK3	M10 S TİPİ DÜBEL - M10 S TYPE ANCHOR	0,023						
AP-ÇK4	M12 S TİPİ DÜBEL - M12 S TYPE ANCHOR	0,048						
			a (mm)	b (M)	L (mm)	LI (mm)	Sıkma Torku Tightening Torque	Emniyetli Çekme Yüğü Safe Tensile Load
			10,00	8	25	10	5,00 N/m	1,00 kN
			12,00	10	30	12	10,00 N/m	1,80 kN
			15,00	12	40	15	20,00 N/m	3,70 kN
			18,00	15	50	18	40,00 N/m	5,70 kN

Sipariş Kodu (Order Code)	Açıklama (Description)	a (mm)	L (mm)	Kg/Adet (Kg/Pcs.)	ASKI Tiji THREADED ROD
AP-ETM8-1000	M8X1000 ASKI Tiji Hanging Rod	M8	1000	0,300	
AP-ETM8-2000	M8X2000 ASKI Tiji Hanging Rod	M8	2000	0,600	
AP-ETM10-1000	M10X1000 ASKI Tiji Hanging Rod	M10	1000	0,470	
AP-ETM10-2000	M10X2000 ASKI Tiji Hanging Rod	M10	2000	0,940	
AP-ETM12-1000	M12X1000 ASKI Tiji Hanging Rod	M12	1000	0,690	
AP-ETM12-2000	M12X2000 ASKI Tiji Hanging Rod	M12	2000	1,380	

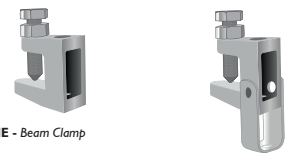
Sipariş Kodu (Order Code)	Açıklama (Description)	Kg/Adet (Kg/Pcs.)	UZATMA SOMUN EXTENSION NUT
AP-M8U	M8 UZATMA KOVANI - Extension Bolt	0,040	
AP-M10U	M10 UZATMA KOVANI - Extension Bolt	0,104	
AP-M12U	M12 UZATMA KOVANI - Extension Bolt	0,120	

a Yükseklik / Height (mm)	b Anma Çapı / Thread Size (Metrik - Metrical)	c Köşegen / Diagonal (mm)	d Anahtar Ağız / Head Width (mm)
40	8	14,38	13,00
40	10	18,90	17,00
40	12	21,10	19,00

Sipariş Kodu (Order Code)	Açıklama (Description)	Kg/Adet (Kg/Pcs.)	MONTAJ SOMUNLARI MOUNTING NUTS
AP-SMKY8	M8 YAYLI SOMUN Spring Nut	0,038	
AP-SMKY10	M10 YAYLI SOMUN Spring Nut	0,039	
AP-KS10	M10 KARE SOMUN Square Nut	0,041	

AP-SMKY YAYLI SOMUN
SPRING NUT

AP-KS KARE SOMUN
SQUARE NUT

Sipariş Kodu (Order Code)	Açıklama (Description)	Kg/Adet (Kg/Pcs.)	ASKI MENGENESİ BEAM CLAMP
AP-MG1	M8 MENGENE - Beam Clamp	0,120	
AP-MG2	M10 MENGENE - Beam Clamp	0,130	
AP-MG3	M8 AYARLI MENGENE - Adjustable Beam Clamp	0,150	
AP-MG4	M10 AYARLI MENGENE - Adjustable Beam Clamp	0,160	

AP-MG1
AP-MG2
MENGENE - Beam Clamp

AP-MG3
AP-MG4
AYARLI MENGENE - Adjustable Beam Clamp

Sipariş Kodu (Order Code)	Açıklama (Description)	a (mm)	L (mm)	LI (mm)	Kg/Adet (Kg/Pcs.)	KOPİLYA SPLIT PINS
AP-K8X80	KOPİLYA -Split Pin	M8	80	105	0,030	